



PRIVATE CIRCULATION

# KUKI WORSHIP SERVICE

3rd october 2010

guwahati

*God our Hope* (Lam. 3:21-24)



souvenir  
CHURCH INAUGURATION

PRIVATE CIRCULATION

# KUKI WORSHIP SERVICE

guwahati



*souvenir*

CHURCH INAUGURATION

# *credits*

EDITED BY:  
SOUVENIR EDITORIAL

TYPESETTING/DESIGN/ LAYOUT  
KIM & LUN THAWMTE

A PUBLICATION OF KUKI WORSHIP  
SERVICE – GUWAHATI  
COPYRIGHT ©2010 KWS-G

WE ACCEPT NO RESPONSIBILITY  
WHATSOEVER FOR THE CONTENT,  
PROFITABILITY OR LEGALITY OF ANY  
PUBLISHED ARTICLES OR  
ADVERTISEMENTS CONTAINED WITHIN  
OUR PUBLICATIONS. EDITORIAL

# CONTENTS

## GREETINGS

Editorial	iv
KWS Guwahati Pastor Greetings	v
KWS Guwahati Chairman's Greetings	vi
KSO Guwahati President's Greetings	vii
Greetings from AIKWSCC	viii
Greetings from KWS all across India and Abroad	ix - xix
Greetings from Churches in North East	xx - xxx
Greetings from Individuals & Others	xxxi

## ARTICLES

Houlama Kikhelna Ngaichat	32
KWS (G) Hou-In Kisah	34
Redefining Christian Leadership	40
Thoughts on Church Dedication	43
Youth and Love	45
Ingredients of a mighty warrior	47
A Tribute to Kuki Worship Service (G)	49
Nangho Pathen hing in-theng nahiue	52
Jehovah Nissi- Pakai chu kaponlap ahi	56
Neocha Chunga Pathen Loupina Kiphong Ding	58
Tonsot gou nangbou nahi	59
KWS (G) Lachoina	60
Kuki Worship Service phachom am?	61
Pathen ding'a thil himo aumpoi	63

## DEPARTMENTAL REPORTS

Church Building Committee	64 - 67
Khanglaite	68 - 70
Nupite	71 - 72
Missionary Project	73
Kuki Welfare Association	74
Comments from church members/well wishers...	75 - 77
Photo Gallery	78 - 81
Church Dedication Program	82

# Editorial



*Christa a sopi te,*

*Chung Pathen phatthei bohna jal'in Guwahati kbopi sung'a cheng nu le pa, pi le pu, u le nao chule simlai um cheng in phat sottu lungtup a kinei Pathen Hou-in tundob theija aumtob lbon a, hiche nikho loupitah melchib jing nading le Pathen phatna ho thab geldob jing nading'a SOUVENIR hi hung kigong abi.*

*Hou-in thenso nading'a eihin kipapiu va souvenir a ding'a greetings hintbot, sab le lhang'a um houbung lamkai ho jouse chung'ah kakipanao kabin phong uve. Chule, Pathen le kiloikhom na ngailut najal a, tomngai tab le gunchu tab a, aphot le nikho tampi sumang'a, tu le khonung a ding'a phachom ding, lung gel giltab tab le sim nom nom um, bin seikhom ho jouse jong kabin pahchao ve.*

*Nehemiah kbanglai a Israel chaten Pathen thu ngainomna le khohsabna lungthim anei bang'un, hiche Hou-in sung'a Ama bou ding'a hung jouse lungsung'ah Pathen thu ngainom na le khohsab na lungthim e-nei thei na ding'un, atbah in hatchungnung Pathen in eihin pe tao ben!*

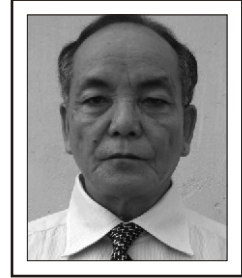
*Hiche lekhabu hi ei-ching ule ei-ventup jing uva pang chule ekinep nao Pa-Pathen in asim jouse phatchomna le malam hinkho kiseumphat nading in phatthei boh ta ben! Amen.*

*Lb. S. Haapu Khongsai*  
27/09/2010

*Lb. S. Haapu Khongsai*  
*On behalf of the Editorial Team*



# Greetings



*Pakai Jesu Christa minin chibai. Iti kipa uma hitam, Guwahati tolpia Kuki chate kaikhomna ding Pathen hou-in theng kbat October 3, 2010 nikhoa thensoa aum thei hi, Pathen thangvah cheh ute.*

*Hiche Kuki Worship Service Church, Guwahati hi hingsot ben, Pathenin thao nujing taben, chule akai jouse Pathen malsomna chang taben. Guwahati tolpia natong ho, themjil ho, kibangpa ho jouse itobanga ivang phat-u hitam. Pathenin hou-in hi akhantou sabna din taonaa sumilpou hite.*

*Kum sottab masanga kona ana kidei jing hou-in hi, mit-a muthei-a ahung kisah doh theina dia sum le tha ana podoh ho chule taona nasatab tab ana nei ho jouse chung a kipana kabin phonge. Amaho lab-a mi phabep vang mollema abitan, amaho jong geldoh ute. Chung Pathenin phatthei iboh cheh tau hen. Amen.*

*October 3, 2010*

*Pakai-a nalhachau,  
Rev. M. Haokhothong,  
Pastor, KWS-G*



# Greetings



## Kuki Worship Service Guwahati

*“But Speaking the truth in Love, may grow up in all things into Him....” Ephesians 4:15*

*Amasa penin Kuki Worship Service, Guwahati, Church sabchai'a aum a, thenso thei ding din mun gei'a dam le bit a eihin pui u vah pa Pathen kathangvah e.*

*Hou-in sab doh na ding a Pathen songa kinepna neijing le kitab taba bung pang jinga KWS(Guwahati) lamkai hole member ho jouse chule muntin a um sopi u le nao kithopina pe a michang a biben hon'a hijong leh ipankhom na jal uva Hou-in sab jou abi tab jeh in kipana seijoulou kabinphonge.*

*Hamkhat, paokhat thokhom'a kilung tohtah a Pathen khat boukhom theina ding a khopi tin'a Kuki Worship Service, phudoh abijing thei jeh in jong Pathen thangvah na peuhite. Hiche kiloikhomna bin, sakho le chena lhongpi chom chom a konna hungkhom ho thakhat leh kilung tob tab a hou in khat sung a Pathen i boukhom ubi pathen deilam abin, hiche kiloikhom nabin Kuki nam pumpi ding a vetjuithei le machalna lentah abinsodoh sab ding jong kinep aume.*

*Mi lbomchan, lung lengvai pum'in ikiloikhom nao KWS(G) bi ana pan jongleo, Pathen song le Ama a kinep na nei pum'a ana bulphu jeh uvin, tunin hiche ikinepnao ga chu imu tao vin abi. Tu le khonung a jong Pathen na ikingai jing dio deisab na jeh a “GOD OUR HOPE” bi thumakai ja, hou-in ethenso dio tob kilbon na hung kilheng abi.*

*Achainan, Souvenir bin sodoh theina ding a ngailut na neitah a lunggel le tha hinseng ab Souvenir Committee ho jouse chung ab ka kipana kabinphonge.*

*Shuhji*  
(SOTHANG HLAOKIP)  
CHAIRMAN  
KWS (G) CHURCH



# Greetings

OFFICE OF THE  
**KUKI STUDENTS' ORGANISATION, GUWAHATI**

Estd: 1994

Motto: Learn, Labour, Serve

Email: lenchonghoikso@yahoo.com

Phone: +91 9678212038/ +91 9401597299

*“To God be the Glory”*

*I, on behalf of KSO-G, grasp this wonderful privilege with thanks in my heart, to congratulate and acknowledge Kuki Worship Service, Guwahati (KWS-G) on this blessed occasion which will forever be etched as a red letter day in the annals of Christianity among the Kukis in yet another instance of the Almighty's providence.*

*From a very humble beginning KWS-G has come a long way, crossing many milestones notwithstanding the usual bumps and hurdles, and has loyalty cater to the spiritual and physical needs of the Kukis in Guwahati - the gateway of Northeast India. In a rapidly changing world of globalisation swept by growing materialism, the dedication and contribution of the KWS-G leaders and great minds - who are the instruments of God- have been nothing less than extraordinary. And I personally feel deeply proud to be a member of this divine fellowship.*

*I wish the publication of the souvenir and the Church opening ceremony a grand success.*

*May the cup of KWS-G continue to overflow with God's blessings and many more souls will quench their thirst from it.*

Guwahati  
26-09-10

sd/-  
(Satkbokai Changsan)  
President  
Kuki Students' Organisation, Guwahati





# Greetings



## Greetings from All India Kuki worship Service Co-ordination Committee

*Pakaija sopi Lunjalun,*

*Amasan KWS(G) Hou-in luttheitab dinga aum thu neibinbetsab u bin nasatab in eikipasab un abi. AIKWSSC min in nabonchao va chungab kakipanaun kabinhongdob un abi.*

*KWS Hou-in dang kisadob um jong leh Gaubati a hi eibo namite ding a jong ichen ham kbat a mun poimo tab abijeh in bitobang Pathen boukhomna ding mun hoitab nabinsahdob u hi kipapi naum ma mauvin abi. Ajeh chu alenpen leh aboipen abiseh hilou vin Gaubati hi eibo North East mite ding a mumpi kbat abitob kilbon na namdang leh jat dang tamtab kilokhom na um jong leh Hou-in hoitab leh loupitab sadob masapen nabi jeh un kithangatpi naum lheb un abi.*

*Hiche Hou-in sab na a kilungto tab napankhom nau leh nathajekhom nauva kon na aban ban a jong kilungto tab leh thakhat tab a napan khom jing diu kakinepnaun abi. Hiche hin inam u kilungto na kbat avetsab abijeh in mijouse ding in vetjui theitab nabiutauvin abi. Hiche hinsahdob na ding a alung leh atha leh aneibo hintob dob bo athab beh in Pathen in phatthei nabob u ben!*

*Tukhang seh hilouva abunglung ding khang boa jong inam miteuvin/ Pathen miten KWS(G) te kilungto na leh kithokhom a pankhom na bo bi ageldob jingtheina ding hi Pathen koma kataonau leh kakinepnaun abije.*

*KWS(G) khangtoujing ben chuleh Pathen phattheibob changjing ben! Amen.*

*Pakai Lenggam a ding a natobkhompin,*

*Rev. Dino L. Touthang  
Chairman, AIKWSSC  
Dated 9/9/2010*

*Rev. Paothang Haokip  
Secretary, AIKWSSC*



# Greetings



KIPA THUTHOT

*Pathen in namkbat na asem Kuki chapa, chanu sim le mal a hung kisukhom Guwahati tolpi a, um sopi ten Pathen boukhom nading, Hou-In boitab le loupi tab, nasab doh tab jeh un, sopite nangbo jalin Pathen kabn thangvah e.*

*Khang kikebel tob kilhon in, tilla thinglhang gamma Tubbem Somte, tun, Pathen lungset na jalin sorkear natong, sumkol vei, chuleb thimjilna jeh in, India gamsung jouse ah ihung kithe thangsob tauvin abi. Hibang chun, i-um nacheb uva eima paova Pathen bouna lamah lunglutna le gunchuna inei jal uvin, Guwahati a um sopi chengin jong, lung kitob tab in, sum le pai chuleb tha-le-jung sen in, Pathen Hou-In theng boitab kbat abinsab doh u hi, Kuki Worship Service (Happy Valley) houbung miten sangtab in kabn kipapi vin abi.*

*KWS Guwahati Hou-in hi nampi dinga kisem phatna hibenlang, akikhom jouse Pathen in phatthei boh jing hen.*

*Christa jala nasopin,*

(Lunkam Lenthang)

*Dated, Happy Valley,  
The 8th September, 2010*



# KUKI WORSHIP SERVICE

Lumbatngen, Law-U-Sip  
Shillong - 793 021

*Pathen chu L.hagao ahi, chule ahouten L.hagao le thutah a ahouding mong ahi. (John 4:24)*

Ref. No. ....

Date 15/09/2010.....

## Greetings from Kuki Worship Service, Shillong

*Kum 12 a upa KWS, Guwahati in Kum 10 sunga lung le tha je khom pum'a na hin bui pi jingu Pathen Hou-in Thieng; Ama houkhomna a mang thei ta dinga jona eipeu Pa-Pathen thangvahna ipeovin, Ama manchah (instrument) khut le keng a pang jing Houbung mipite jouse chung a pachatna le kakipapinao kahin phong uve.*

*Guwahati khopi hi khopi-len dang tampi toh kijop mat tona lampi pha tah nei khopi khat ahi. Hibang chun KWSG jong hi leiset a kon'a vangam lhun theina dinga lampi pha tah (HOUBUNG) nahi jing thei na ding u vin Pathen in na mang cha jing tao hen.*

*Pakai lengam a natoh khom piu:*

*Rev. J. Seiboi Guite*

*Pastor - Kuki Worship Service, Shillong*

C/o KWS Complex  
Law-u-sib, PO Madanriting  
Shillong-21 #9862762245(M)

# Greetings

## KUKI WORSHIP SERVICE DELHI

(An association of Kuki Christian residents of Delhi and N.C.T. of Delhi)

Regd. under the Delhi Societies Registration Act (XXI) of 1960

*Motto : Worshipping God in spirit and truth*

### KAHIN KIPAPI UVE

*India gam kebopichomchom a Kuki Worship Service (KWS) kiloikbomna um jongleb, hiche ho lab a KWS Guwabati in amasapenna Hou-In mun chobdobna leh tua Hou-In tungdoh theiya aum tabjeh in KWS Delhi in jong kaki pa nausangtab kabin phongdoh uvin abi.*

*“Amajeh a thiljouse hung um dobabi” John 1:1*

*Ei Hubbingpuu Pakai Jesu Christa jalla Pathen chate ibiiva, Ama a ikingajeh uleh Ama itabsan jeh uva tunia atbisan a albat sate Houbung in ilungtup u imolsotab jeh uvin, Hatchungnungpen Pathen thangvahna le choiatna ipewin abi.*

*Amalouvin imacha iboltbeipouvi, Amabeiyin eibo imacha ihipouwe. Akitongdoh leh akiboldoh jouse hi Ama loupina ding abi.*

*Pathen Hou-In theng kisabna dingabin tha le jung tamtab lut intin, ulsa tampi longdohin tin, sum-le -pai tamtab lut intin chuleb alungtbim leh aphaltobdoh tamtab na um diu tabsanaumin abi. Nebemiab khanga Jerusalem kulpichu mikhat hatna bouwa kisempha ahipoi, Israel pumpi kithoa atbepnacheb u mangcha a kulpichu akaipbat u abi. Pakaiya dinga na kipbaldobnabo u jallin ajatjat in Aman malsomna nape tau hen.*

*A Hou-In theng kisabdohjeh bin, KWS Guwabati member ho lab a Pathen houna lam a gunchuna pung henlang, Ama ngailutna khanghen. Hou-In isabdoh uva, amangailutna apunbe louleb, a ‘building’ keoseb tungdoh ibidiu abi.*

*Tuavang nang hon na neitabjeh uvin, KWS dang dang, adeb a Delhi kebopia jong Hou-In mun chob nadinga pan nabin labdiu kbaki nem uve.*

*Christa a channeikbompui,*

*Sd/-  
(TONGMINTHANG MISAO)  
Chairman, KWS Delhi*



# Greetings

*Greetings from  
Kuki Worship Service - Mumbai*

*The Kuki Worship Service (Mumbai) sends this greeting to all the members of the Kuki Worship Service (Guwahati) on the occasion of your “Church dedication” celebration.*

*We are so very glad to know that the construction of the KWS (G) Church - a symbol of unity, oneness, strength and divine providence - has been completed. Glory be to God! We join you in your thanksgiving to our heavenly Father for His love, faithfulness, guidance, providence and goodness.*

*May KWS(G), through the church continues to be a light to beckon with & a blessing to the Kuki society and beyond- to all God’s children within and without Guwahati. May it always be a place where the hurting, the depressed, the frustrated, the confused, the tired, the dejected finds love, help, hope, forgiveness, guidance, acceptance and encouragement.*

*May the Good Lord continue to shower His blessings upon the KWS (G).  
On behalf of all the members of KWS (M) here.*

*In His service,*

*(T. Lbungdim)  
Chairman, KWS (M)  
September 16, 2010*

# Greetings

*Dated:- 14-09-10*

*Greetings from Kuki Worship Service-Kolkata*

*It is indeed an honour for the 12-year old KWS (G) to celebrate the fruit of their hard work and consistently inflexible determination to build God's sanctuary which culminated ten years back. It is this time of the year when all the kukis around the world joins KWS-Guwahati to celebrate the dedication ceremony of the church on 03 Oct 2010. This day invariably will herald a minute appraisal of the road traversed so far and the future climb ahead. KWS (G), under the abled guidance of God fearing leaders and the enduring support of its members had set good examples which will ultimately dictate the impact of the momentous drive to propel our society towards a metamorphic transformation. I am hopeful that one day our fragmented society will learn a thing or two from them and come united under one umbrella the way we do believed in the same GOD.*

*KWS-Kolkata also shares this special day with abiding joy and gratitude to our living GOD and joins in celebrating the remarkable achievements of KWS (G) and urge them to continue to unwaveringly shoulder its responsibilities to God and to our society.*

MAY THE GOOD LORD BLESS KWS. THANK YOU

*Yours in Christ,  
(S.HAOKIPJEMPU)  
Secretary  
Kuki Worship Service-Kolkata*



# Greetings



*Greetings in the Name of our Lord and Savior Jesus Christ!*

*On this auspicious occasion, it is with great pride that I say “With God by your side, Yes, you can!”. Your hard work and perseverance are richly rewarded and once again you have glorified God's name by completing what you've started. It is indeed, a day to rejoice and celebrate for, what was once a vision and a dream has become a reality today and we have witnessed God's faithfulness throughout your endeavors. It serves as an example to other Kuki Worship Service in India and on seeing what you've done, we, the Bangalore KWS also say “Yes, we can”. As Luke 1:37 says, “For nothing is impossible with God”, we believe we also can.*

*On behalf of all the KWS Bangalore members, I wish you all the best as you inaugurate the new Church Building and may God richly bless the Fellowship in days to come.*

*Yours in Christ,  
Jack (Thangminlen Misao)  
Chairman, KWS Bangalore*

# Greetings

## OFFICE OF THE KUKI WORSHIP SERVICE (SILCHAR)

Sivalik Park, Meherpur,  
Silchar – 788 006 (Assam)

Ref. SIL/KWS/Br/05/2010-11

Date. 16/09/2010

*Greetings in Christ,*

*It is indeed gratifying to behold yet another milestone being created in the history of Kuki Worship Service (India) with its Guwahati Chapter inaugurating own building (place of worship) situated in the heart of the corridor of the North East, a second unit after Shillong Chapter to have its own place of worship. Surely, God is leading us this far, to bring about change in the way we worship Him. For KWS, Christ is the centre of all its endeavors. Hatred, division, envy, strife, class, creed, groupism et al has no place in its congregations.*

*Let this moment be a time to reflect and recollect what the Lord said to Cyrus; “I will go before thee”. It was for Cyrus, but it is evermore the heritage of all the Lord’s own spiritual servants. Only let us go forward by faith. Crooks and turns of human craft and satanic subtlety shall be straightened for us; we shall not need to track their devious windings. The gates of brass shall be broken and the iron bars which fastened them shall be cut asunder. We shall not need battering ram nor the crowbar. The Lord Himself will do the impossible for us and the unexpected shall be a tact. KWS (Guwahati) is such a one that the Lord goes before them. Oh Cyrus (KWS, Ghy), hold fast on your good works, for the Lord is going before you and calls you by name.*

*We, the Kuki Worship Service (Silchar Chapter), share this joyous and solemn occasion with KWS (Guwahati) and its congregation in praising God for His wonderful companion and leading. We applaud you for being chosen by God to build His house, a sanctuary for the Kuki diaspora. May you be fruitful and bring forth laborers for the harvest is truly plentiful.*

*Fellow stakeholder in Christ.  
Sd/ (Kamkbochon Chongloi)*



# Greetings

## KUKI WORSHIP SERVICE, AIZAWL

Zoram Entu Pawl Conference Hall  
M.G. Road, Upper Khatla, Aizawl - 796 001, Mizoram



*It is indeed a great joy to hear that the Kuki Worship Service, Guwahati is publishing a Souvenir during the inauguration of the new church building.*

*It was in 2007 that I had first attended the KWS (G) worship service during which the present church is under construction.*

*In the establishment of KWS from the very beginning we have been experiencing the power and faithfulness of God. We can say "this is the Lord's doing, it is marvelous in our eyes" today KWS has become one of the ecumenical bodies for the Kuki Christians.*

*I on behalf of the Kuki Worship Service, Aizawl believe and wish that the Kuki Worship Service, Guwahati will continue to shine for Christ and contribute significantly for the extension of the Kingdom of God. May "Shekina" the glorious presence of God be with you all.*

*Date:  
14th Sept. 2010, Aizawl*

*Letkholun (Lulun)  
Secretary  
Kuki Worship Service, Aizawl*

# Greetings

*Guwahati a um sopi Ule nao, Nu le Pate ho, Pathen mina naki loikhomnao KWS (G) in Gam leiset nachoh doh uwa tua Hou Inn building sadoh a In Thensona kin mang theija na um tab jeh un Pachat na sangtah kabin peove. Pakai min a neile gou sum le pai itlou bel a pan nalab na ho jal u abi ti mutbei in a um in abi. Kuki Worship Service Itanagar Branch in kipa thanop na lentah kabin neipi uve.*

*Pathen in KWS (G) member jouse nabon chaovin Phatthei nabohjing taoben Amen.*

*Dr. Thensei Lhungdim  
Chairman  
Kuki Worship Service (Itanagar)*



# Greetings

## KUKI WORSHIP SERVICE, PUNE

C/o 4/B Preeti Prakash Housing Society, BT Kavade Rd. P.O. Mundwa, Pune- 411036.

Contact Nos: 09762146006, 09765898453, 09860132625

Place of Worship: Church of North India, Swargate, Guruwar Peth.

Timing: 2:00-4:00 p.m. Every Sunday. Email: kwsp@gmail.com

---

*Bless the Lord, o my soul: and all that is within me, bless his holy name!"  
(Psalm 102:2).*

*It is our deep pleasure to share your joy and happiness on this momentous occasion of dedicating KWS Guwahati Church Building to the glory of God. While it is not impossible but not easy to build a building of this sort, we, KWS Pune acknowledge that today is the culmination of the sacrificial offering and selfless labour of countless individuals. It is a significant milestone in the history of KWS Guwahati and KWS India in general.*

*It is our prayer that the Church Building will foster a sense of Unity, building and nurturing one another and help us in the fulfillment towards the proclamation of the Gospel to All Nations- A task which our Church as a whole, and each of us individually, has been entrusted with by the Lord Jesus Christ in response to the world that is to once again be united with Him to the end of the ages.*

*May His presence abide with you now and until He comes. Amen.*

*Your Fellow Worker in His Vineyard,*

*L. Tongminthang Haokip  
Chairman*

# Greetings

## KIPA THUPHON

*Kuki Worship Service, Guwahati Houin lutna mangthei dinga nabin pui galkai-u Pathen chu choiat nale thangvah na kapei. Hitobanga nakitho khom naole napan labnao jalun houin hoitab neitheia naum-u tob kilbon in, kipapina le pachatna nabon chaova chungah Kuki Worship Service, Hyderabad thalbeng in kabin phonge.*

*Phat chesa kum ho-a nakingailut naole nakitho khom bangun maban ah jong Pathen in napui jingu hen lang, muntin na KWS unit ho a dinga jong kithangat pi tah hung hijing jeng uvin.*

*KWS Guwahati hi phat abung lbung ding boa jong abung khanglet jing theina ding in Hatchungnung Pathen in umpi jing taben.*

*Henginlen Kipgen  
Secretary, KWS Hyderabad*

# Greetings



**Zomi Christian Fellowship Guwahati**  
CBCNEI Compound, Pan Bazar, Guwahati-781001. Assam  
Phone: +91-9435558838

---

*Amasa pen in E hukdampau Jesu Krista min thiangtho in Kuki Worship Service, Guwahati mipi te zosia Zomi Christian Fellowship, Guwahati thasik in Chibai ka hun buk hi.*

*Tuni hun ni lopi le thiangtho Biak Inn hawn na (Church Building Inauguration) la nei na ding uah hin ka kipak pi nau ka hun puang abi. Zia mun thiangtho (Holy place) hi thagau ab gil kial le babsam te ding in chawl dam na hung hi benlang, Pathina Lalgam kek let na, a lopi na suk lat na leh mal jawl na tam tak hung luan dawna hi ding in ka dawi sak na lianpen ka hun lan hi.*

*Lalpna'n jia Inn ab ami thiangtho te hung kilawi khawm na hi thagau ab awp khum jing henla, namtin-chitin, kawl kim vel tianga chan chinpha (Gospel) tangkon pi tu te hi jing ding in thagau mal jawlna le pui huai na chu tu le kum tuang in la chung un um jing tau ben.*

*Kha kipak hi.  
Krista ab la sep pin*

*Sd/-  
Mr. Lut Lian Khup Vaiphei  
Chairman ZCF, Guwahati*

*Dated: 23.09.2010*

# Greetings



**GUWAHATI HMAR CHRISTIAN FELLOWSHIP**  
 CBCNEI Compound, Pan Bazar, Guwahati - 781001

September 25, 2010

*It is heartening to know that the Kuki Worship Service, Guwahati is inaugurating their church building on October 3, 2010 and a souvenir is being published to mark the occasion.*

*I, on behalf of Guwahati Hmar Christian Fellowship extend my heartfelt greetings to the Kuki Worship Service on this inaugural day of the church building. May the good LORD use the church for communication with His people who come to worship here as the tabernacle in the desert. I wish the church to be a blessing physically and spiritually to all who come to worship God.*

*I congratulate the members of the Kuki Worship Service for establishing the church and hope that they continue to spread the gospel to unbelievers with one accord.*

*Dr. Chawngrolien Chonzik*  
 Chairman, GHCF

---

Worship Service: Every Sunday – 12:15 p.m. KTP Fellowship – Every First Sunday (after Worship Service)  
 Women Fellowship – Every Second Saturday, 1:00 p.m.  
 Contact Phones: Chairman: +91-9435149288; Secretary: +91-9435343060; Pastor: +91-9435102143  
 Evangelism: +91-9435548314; Mission: +91-9435309837; Youth: +91-9435885378

# Greetings



**KUKI CHRISTIAN CHURCH**  
**ASSAM SYNOD**  
B.P.O : SONGPIJANG  
P.O: HAFLONG – 788819 N.C HILLS, ASSAM

Ref.No.....

Date..24/09/2010.

*KIPA THUPHON*

*Amasan hatchungnung Pa-Pathen mintbeng kabin thangvah in abi.*

*Guwabati kbopi a um Kuki chate lungkhat le kingailutna-a alonkhomna Kuki Worship Service Houbung Tolbol 4,1998 kum'a ana kiphudob, 2000 kum'a pat Houin tundobna dinga taona to thoa tohgon loupitah naneiyu to kilbon'a lungkhat, thakhat najekhom'uwa kipumkhat tab-a napankhom nau Pathenin phatthei aboh jal'a Ama Houbub theng Ellha 3, 2010 nikhoa thenso thei dinga aumtah jeh-in i-Pakaiyu le eibubhingpau Jesu Christa min le Kuki Christian Church, Assam Synod thalbengin kipathu kabin phonge.*

*Hiche kin loupitah akiman to kilbonin Pa-Pathenin Amithengte kiloiikhomna Kuki Worship Service (Guwabati) tabsa le lhagaova Kuki chate kipumkhatna abijing theina ding le Alenggam machalna din phatthei bob henlang, lhamonna le thudih lamdih-a eipuinom jinguva Lhagaotheng'in umpi jing taben.*

**KUKI WORSHIP SERVICE HINGSOTHEN!**

*Sd/-*  
*(Pr. H. Haolai)*  
*Executive Secretary*  
*K.C.C. Assam Synod*

# Greetings



## Guwahati Satsang Church

Patgaon, Rani Road, PO Borjhar, Guwahati, Assam  
092070-45208; 098640-24524

---

*Guwahati Kuki Worship Service*

*Sept. 23, 2010*

*Brothers and Sisters,*

*I congratulate each and every one of you on this glorious day of Church Inauguration for the vision that you all have and labor together for all these years.*

*It is such a great joy to know that KWS is inaugurating its own Church Building on 3rd October, 2010 in Guwahati city. The Church building and the Body of Christ speaks our uniqueness and true identity. King David had a special blessing from the Lord by having a desire to build Temple for Him. I pray that every village and town in Assam, the North East India and the whole India be filled with this type of visible Church building.*

*May the power of the blood of the Lord Jesus Christ flow from this Church to proclaim and preach the Gospel of the Grace of God and His eternal free forgiveness of sin and Salvation to all the people in Assam, the North East Indian states, the rest of India, the surrounding countries, and to the ends of the earth.*

*“For so the Lord has commanded us: ‘I have set you as a light to the Gentiles that you should be for salvation to the ends of the earth.’” (Acts 13:47)*

*May the whole congregation bear His voice and obey and be a blessing to others. Wishing you all His grace and blessings in the days ahead.*

*Cordially,*

*Rev. T. Kampu*

*Pastor: Guwahati Satsang Church*



# Greetings

## Guwahati Baptist Church

Panbazar, Guwahati-01

---

*Dated the, 25-09-2010*

*Greetings!*

*I am happy to know that the Kuki Worship Service established in 1998, has grown to a full-fledged church getting ready for dedication on October 3, 2010. On this auspicious occasion, I joining with the members of Guwahati Baptist Church convey greetings to all the members of the Kuki Worship Service. May the Lord bless you abundantly as you continue to serve and glorify Him.*

*A. Haque*

*Pastor*

*Guwahati Baptist Church*

*Panbazar, Guwahati-1*



# Thadou Baptist Association, Assam

Regd. No. 135 of 1988 under Societies Registration Act. XXI-1860  
 Head Office : Thadouveng, Diphu, Karbi Anglong, Assam, PIN 782 460

Ref. No. :

Date :

## GREETINGS MESSAGE

It is really immense pleasure to learn that the KUKI WORSHIP SERVICE, Guwahaty, Assam is inaugurating its New Church Building at Sixth Mile (VIP Road), Guwahaty on 3<sup>rd</sup> October 2010 and bringing out a Souvenir on this auspicious occasion. I, on behalf of the Thadou Baptist Association, Assam convey my sincere greetings to all the members of the Church (KWS-G) and participants of the function. It is my prayer that the Lord will shower His abundant blessings upon all the members and continuing to guide the Church (KWS-G) in the days to come.

I wish the KWC-G a grand success.

Mr. Seikholen Chongloi  
Executive Secretary, TBA-A.

Dated 26<sup>th</sup> September / 2010.

---

Motto : Go and preach. (Mk. 16:15)

# Greetings

## Abundant Life Faith Church Guwahati, Assam

---

*Greetings to all of you in the matchless name of our Lord and Savior Jesus Christ.*

*What a joy and a privilege to salute you all on this occasion of your church building inauguration. Your accomplishments from the initiation of your church in 1998 to the completion of your church building are indeed a testament to the purposes that God has charted for your community. He has brought you thus far and has established you; a member of the larger body of Christ, in a place where the Gospel has barely been witnessed only goes to show the role He must have for your church in our city.*

*Knowing the heart of your leadership, I am persuaded that you will indeed run your race well. I am encouraged to witness your faith and all your accomplishments and draw inspiration and comfort for we serve the same God. I thank you for your friendship and also express to you that you have a friend, a brother and a family in our church that you can call on and rely on in the days to come.*

*I, on behalf of myself and my church rejoice and celebrate with you. May God's choicest blessings always be your portion.*

*Warmest regards*

*In His service*

*Pastor Balie Kirba  
Abundant Life Faith Church  
Guwahati, Assam*

# Greetings

## KUKI CHRISTIAN CHURCH

Dewlahland, Imphal -795001, Manipur.

KIPA THUPHON

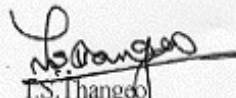
27/09/2010

Guwahati khopia cheng Kuki Christian ten Pathen houkhomna dinga Houin hoi tah asahdohna chunguva Kuki Christian Church thalhengin amasatah-in, jona apeova Pathen kathangvah-in chule Pakaiyin amanchah ahin tongdoh Houbung mite jouse chungu kipa thu kaphongdoh-e. Hiche Pathen Houin Theng sahdohna dinga lunggel le natohnaa, taonaa, nei le ngaa pangho jal'a tunia Houin Theng sahdoh-a um'a chule akot hondoh theiya um ahi. Hijehchun ahepha jousen jong achunguva kipapina anei cheh din ka tahsan'e.

Pathen in Guwahati Kuki Worship Service phatthei boh jing hen !

Pakai chu atonsot in vahchoiyin um jing hen !

Pakai Lenggam'a natohkhompiu,



T.S. Thango  
Finance Secretary, KCC



# EVANGELICAL BAPTIST CONVENTION CHURCH

(Regd. No. 2294 of 1977 Under Societies Act. XXI of 1860; and

Regd. No. 194160016 of 1985 with Ministry of Home Affairs)

**GUWAHATI**

**EBCC/GHY/Gen.Corres/2010-11/16**

**21-09-2010**

Ref. ....

Date :.....

## MESSAGE

Greetings to all the members of the Kuki Worship Service, Guwahati, on the occasion of the inauguration of the Church building at Guwahati, in the name of our Lord and Saviour Jesus Christ!

It is amazing to see how the Lord has led the Worship Service during these years. We, the Evangelical Baptist Convention Church, Guwahati, rejoice with all of you for the mercy, grace and faithfulness of God. We congratulate the members of the Worship Service on this occasion and wish the Church Inauguration Service a grand success. We also pray and wish that the Church Building be a house of praise and worship, a healing place (a Beth-Saida) and a shelter for the spiritual destitutes.

May God bless the Church Inauguration Service and continue to guide the Kuki Worship Service, Guwahati, to be a blessing to others in the years to come!

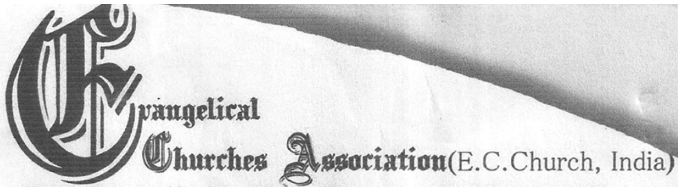
Yours in His Vineyard,

Sd/-

(UPA H THIAUZAKHUP)  
Chairman, EBCC, Guwahati

---

C/o Flat No IA, Surya Enclave, Opp. Kiran Service Station, Wireless,  
Dispur, Guwahati-781006



Regd. No. 28/SR/85 CCpur Regd. No. 19460020/85 HM

*Rev. T. Janglun Haokip*  
 Executive Director, E.C.A.  
 Editor: HETTOHSAH  
 9856163414 (mobile)  
 - rev.t.janglunhaokip@gmail.com

Ref. No. ....

Date: .....



**KIPAPINA THUTHOT**

Kuki Worship Service Guwahati Hou-Inn lutna kin-gon kakipapi lleh jenge. KWS(G) kipat ding kona Pu Y. Touthang Inn a kihou patna achun keima tahjong kana pangin tunia hitobang aumlouva kona hun um dohsah thei ihoulai u Pathen le lamkai masaho chule tuni chana hin lamkai jing ho jeh in loupina Pathen kapen, alunglhaina K. W. S(G) chungah kakipana kaphonge.

Tunin katahsa tahin nalah uva hunglhathei hih jongleng hiche niloupi October 3, 2010 (Pathen nitheng) hin 'Halelui'ah! Amen tin vang phat tin konna Chung Pathen thangvah ute'. K.W. S (G) Church Building Pa Pathen in vengbit jing henlang asunga kikhom ho jouse lhagaothenga kona cham le lungmon, halna le hatthah na pe jing taken.

Kakipah e.

*T. Janglun Haokip*  
 9-9-10  
 (Rev. T. Janglun Haokip)  
 Executive Director  
 E.C.A.

Dated: ECA Office  
 The 9<sup>th</sup> Sept. 2010

# Greetings

*Warm greetings from Saraighat Community Church,*

*It's really great to know that KWS-G is inaugurating the Church building.*

*May our good God make the Building to train, edify, sendout many Kuki youths all over the World as a lights for His glory.*

*Our sincere prayers are always with you for the successful program!*

*Glory to God!*

*Pastor Thanglal  
Saraighat Community Church*

# Greetings

*Dear all members of KWS, Gty,*

*Greetings to all from Seoul,*

*I do appreciate all your efforts and achievements for the Lord. As you have said I just would like to give my little comments in this regard.*

*“My dear Christian friends, companions in following this call to the heights, take a good hard look at Jesus. He's the centerpiece of everything we believe, faithful in everything God gave him to do. Moses was also faithful, but Jesus gets far more honor. A builder is more valuable than a building any day. Every house has a builder, but the Builder behind them all is God. Moses did a good job in God's house, but it was all servant work, getting things ready for what was to come. Christ as Son is in charge of the house.” (Hebrew 3:4)*

*In His love (Sarang) and Service,*

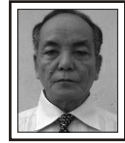
*Rev. Paokhosei Kipgen  
Seoul*



# Houlama Kikhelna Ngaichat

- Rev. Haokhothong -

Pastor, K W S - G



**P**athen tilou thil ho le mihem thilsem ho akikkel lou aumpoi. Akikkel khat aum teng, alui sangin athah joh min adei tei jie. Thil thah thah asoh in, mihem lungdei abang ahiji tapoi. Hitibangma hin tulai Christian ho sunga jong lamkai ho hihen, milham ho hijongle 'akikkel' hi angaicha jingui. Pathen houten jong ahou danu akhel jingu angai tai. Noi-a keima deidol phabep kahin sune :

**1. Houbung kivaipoh:** Denomination tapi aumtan, athah thah jong aumbe jinge. Denomination ho kivaipoh dan akibang poi. Eima kivaipohna toh akito lou jeh a mi khat denomination noise lou ding ahi. Denomination a kithet angaipoi. Ibonchauvin Christian ihi cheh ui, tih sumil poute. Kihet themto chil chel hi kingailutna ahin, vana Pa lunglam ahi. Kivaipohna khat lamkai pipu pen in, ama khela hung pang thei ding mi atilkhoh angai-e. Meeting, conference, seminar, training hoa lamkai pipu pen ache jing sangin, atoh khompi ho jong solna thei hoa sola kithem chuhsah ding angaiton apha.

**2. Houthu leh leiset thu:** Houthu thudol leh leiset thudol jong phatea khen angai-e. Houthu thudol hoa hou lamkai kam vet apha. Leiset thudola jong hou lamkai te kiha phumdale apha. Hou lamkai ten leiset thudola lamkai ho ahilna thei leh advice, suggestion aphen thei aum jie. Ajeh chu hou lamkai hohi abang komle Pathen Lhagaovin apha lam ahetsah phat jong aumjie. Eima eima gamgi kihet them

lou jeh in, tulai hin akiboil leh tai.

**3. Bible sim ho:** Tulai hin mi Bible jilnom atam leh tai. Houbung hon mi khat tou Bible simin asol jiuvin, asim chai teng agoi nomji pouve. Asol ho chun agoi-u ngai ahi. Koi tobang ama chama simho chu thuchom ahi. Houbung hon Bible sima asol diu mi chu phaten kholchil hen, kouna mulou, Pathen natohna dia thanom lou ho soldau hen. Natoh holna dia ahiloule kivahna dia sima jong aumda tapoi. Hiche ho jeh in i-houbung aboi pantai.

**4. Tulai Christiane:** Christian ho leh Christian lou-ho kikhehna umseh tei apha. Ikibang cheh cheh tauvin lungkham aume. September 23, 2010 a Rahul Gandhi in Silchar ahung vila khangthahte henga ase chu, gam khat khonung ding hi simlai khangthahte chung akingamin, amaho ho hi phat achesa ding hilouva khonung dia hing ahivue, anati. Khangthate hin lhagao lam leh tahsa lama khonung ding kahivue, tih sumil louvin thenna hinkho leh thepna hinkho dellu leh dei ahi.

**5. Culture leh Custom:** Houbung sunga leh hou kivaipohna a milui ho chena lhongpi (culture) leh chonna dan (custom) jong jabol angai-e. Ijem tia mun khat touva compromise bol ding angai leh hou dan thu joh chungnun sah ngai ahi. Ajeh chu Pathen lunglam louva chekhah ding hi kichat umtah ahi. Hijeh chun jui thei ahina chana culture leh custom sumil poute.

**6. Revival:** Houbung sunga haldohna semji hi ngaichat umtah ahin, lhagao lama machalna ahi. Haldohna neitheu lou houbung chu athi ahi. Halna (revival) hi lungsou (emotional) jeh hilouva Christa a

kiphal thengna jeh-a haldohna nei joh ngai ahi. Revival boldan jong alui ho chu khela, tulai mihem lungput leh tulai hinkho kiman dan toh kitoh-a heidoh ngai ahi. Alui kiti pou pouva mi achim tai. Lungthah leh tha thah in Pathen hou tau hite. Pathen hi ngailut (lungset) thengtah pupa ahin, eiho khat le khat kikah-a ki ngailutna in vai homute. Christa na itoh nauva hunam (force) panda hen, lungset joh pang hen. Pathen na itoh jeh-a Pathenin ingaichat sum le phatthei bohna eihin peh ding galdot joh utin, sum jeh in Pathen na tong daute. Pathenin ei kivoppi jing tau hen, chibai.



# KWS(G) Hou-In Kisah (Pakai : Kakinepnao)

- L.L. Khongsai -  
Secretary, KW S - G



## Thupatna:

KWS(G) Houbung'in a-itih a suhmil theilou dingin, Pathen in aphotna eimusah tauve! Kinepna neiloute dinga kinepna, lhasam te dinga thahatna, kineosah te dinga Loupina Pathen choi atnin umhen! Kana ni jankhat bou ahin, Pakai thahat jallin, jingkho hungvah in, jing ninou melhoitah ahungsoh kit tai!

## Phat chesa ho:

Kum 1992 a kipan gale tol umjeh in, niseh in kitha kimatna, thile manna, nehloou chah louna, kana le lhisona ichennaogam jouse a ana umin, kum nga(5) lam hitobang dinmunna ina umphat un, khochen, inchen le Houbung ana chavaï gamtan, ahao jong avaijong, muntinnah mipi lamvaitah in ana ki-ume.

Hitobang nikho laichun, Pathen lungsetna jallin, 17th November, 1997 nin, hiche pet a Guwahati a ana um KSO lamkai ho makainan, upa natong lung gelthei ho jouse toh kihoukhom jouvin KWS(G) ahung kiphutdoh in, 4th January, 1998 nin thensona kin ana kineije. Ahung kiphudoh nia pat hiche Houbung hi a member ten "Ken Houbung a kona ipi kachan ding lom umam ti holkhoh louvin, ken ipi kabolthei ham?"ti lunggel pumin ahung machal peh'e. Hitobang chun thil ngaichat ho - Labu, khong, tolom donna, pekhong, chadonkhomna ding sum chule sign board geijin, apet pet'a kipeh doh naho a konin suhton ana umin, kaikhomna masapen nia kikhom mi 73 anahin, tolom Rs.676.00 dondoh anahin, tunin KWS(G) member hi Pathen lungsetna jallin, mi 400 alhingtan,

Pathen loupihen!

## Hou-in sahnading Lunggel:

Kum jabi thah hunglhun ding toh kilhonin, 2000 kumin vannoi Y2K boina jeh in lung linglaonan analon, Pathenin amite KWS(G) te vang MANGKHAT eina peuve. Hiche petna kikhopna mun Satribari Christian Hospital, Chapel munchu, ana damlou umna mun ahijeh in, lung nachimtah in, Pathen vahchoila jong akisa theipon, thil le lo koina le, kipani, lungjin nia manchah thei anahipon chule Guwahati sunga Hou-in dang umho jong kikhopthei nading phat ong nei ana umtah loujeh in, Hou-in neiding chu ngaichat na ana sang lheh jenge.

Mi lhomcha ana kihijeh in, Hou-in lam ding chu thil hahsa tah chu anahi. Ahin, mi tam le lhom jeh hilou, sum neiman le haosat man jong hilou, ngaichat nachu Pakai 'a kon ahijeh in, Hou-in sahnading chu kipan pou pou leh ol'in midangin hin banjom intin, nikhat le Pakai Hou-in chu tundoh a umtei ding ahi ti tahsan na jeh in, ana kipan'e. "Pakai kum 10 sunga amun ding kachoh doh uleh keiho bolthei sun hintin, ahin hiche sanga majo a thil kabol doh'u aumle Nangin nei umpiue ti kahet jing diu ahi" tih kataona ana hijenge.

### **Hou-in Lim le Mel:**

Hou-in lim le mel ding akiseikhom lai jin, akah le Assam type, akah le RCC, akah le dan tamtah a sah ding tin ana kisei le le jin, achainan thil dang tampi ngaito louva, dan nia sahding, akingai chapen Hou-in chu achung dan hiding chule anoi dan chu Sunday School/Hall a man thei ding'a sah din pha ana kisa'e. KWS(G) Hou-in hin thinglhanga ichenna in lim le mel apun, hiche hin avetsah nom chu, i-in houhi, Pakai chenna in ahisoh keiding deina le "Pakai ka in uvah hung cheng jingin" ti taona jong vetsahnom na'a kibolahi.

### **Hou-in Kisah Dan le Machalnaho:**

Akipat til laichun, muntin'a kithopina akithum masang in, ei kihabol ding angaidan akigelkhoh in, Tahsan Kitepna ana kipanin, member jouse alen aneo, natong natonglou, atam alhom thu umlouvvin, kitoh tah le thanom tah in lung lhai sellin, ana kipang cheh'e. Simlai ho chun abang lhakhat a Rs.10/-, Rs.20/, Rs.30 etc. kitem a, pejong ana um dapoi. Phat chom khat jouvvin, natong jousen lhakhat lo akitoh in, chujouvvin, lhakhat lo kehkhath akitoh cheh kit in, chule donation coupon akisemin munchom chom'a houbung ho komah panpina ana kithumin, Building Box jong incheh a ana kikoijin, ana kihong jinge. Pathen thilkidang bol jallin, houbung hole mimal chule ginchat lou na mun hoa konin jong panpina Pathen phat thei bohna tanglou hellin ana kimu jingin Pathen thangvah in umhen! Chule hitobanga min Pakai ngailut na jal'a apeh sum le paiho chu, kitah tah a manchah ding ahijong ana kigelkhoh jinge.

Panpina nasatah a akingaichat jing lai jin jong, kiletsah na thu hilouvin, sum le pai deinan, Pakai min panin maipha ve'in, milen milal ho le ahaosa ho kom khel khel'a khutdo a sum le pai holding pha ana kisapoi. Ngaichat naho chu mi kiseipeh a, Pathenin alungthim'a pehnom na lungthim apeh dung jui'a pha asah kham kham eipeh houchu kipah tah a ana kisangji ahi.

Pathen thilbolthei kidangtah jallin 2002 in amunpi (3600 Ft2) akichodoh in March 2004 in Hou-in sah ana kipanin, 2005 in amun themkhat (720 Ft2) akichoh be kit in, chujouvvin Hou-in sah ahung kibanjom jing peh'e. May 2006 in anoilam achung akikhujou phatnin, abang themkhat akigenin, window umloulai ahivangin, Houbung mipi athanop val jeh in, window umlouvvin, kaikhomna ahung kimang pantai. Amun akichoh til laichun VIP road jong ana kismhoi loulai ahin, manbaitah in ana kichon, Pathen thilbol ahidan chu, akichoh jou jouvvin, VIP road ahin semun, immun manjong nasatah in ahung khang'e. Aleiset lupdan ana hoimang loujeh in, amailam stair case umna dingho ana boijin, ahin hiche jong chu, Govt. in amasanga lampi ahin sem uva, nala ahin sem phat un, Hou-in mun asuhkhah a staircase ima jong vohlhah hung ngai dingham tia kichatna ana kinei jong chu umtalouvin, kituptah in ahoidhtai. Chule window le kot ho jonghi Moreh a kon'a sopi ule nao panpina jal'a ana kipolut cheh ahi. Hou-in mun manhi agomin Rs. 6.71 Lakhs man ahin, asah chaina manhi Rs. 47 lakhs chule Hou-in le akim akenga mancha hole thil ngaichaho a kismang

mong hi Rs.78 Lakhs ahi. Hiche hi kipat til laiya chu manga jong ana kimat phalou ahin, Pathen thil bol kidangtah chu ahi.

### **Houbung in Agelkhoh'a Achepiho lamlahnaho:**

Hiche Houbung hin kingailut na'a kivaihom ding agelkhoh in; teptena bei'a eima chama hungkon thilpha ho kipat a bol jengding; aumlou thil chung a phun phun sanga ibolthei khat bolding; mi en en sanga thip beh'a engse lou hel'a na toh ding; mi seiphat ding deina a mun phalai lai hol sanga thip beh a ibol thei thilphachom khat bolding; thudih mijepna a neilouva ngailutna neitah a seiding; hahsat genthei nile ei kigelkhoh najal'a kidel to ding; mi seiset sanga iseinom hochu kimaitoa kihoupi ding; thil kibol hohi athah beh'a ahoi cheh a midang bol sanga hoijoa boldoh nom nale ijakai Pathen lhagao mapuina noi'a lamjot ding kitihohi nasatah a kigel khoh a kichepi ahin, hiche hohin Guwahati spirit tia kisei jichu atah langjahi.

### **Guwahati Sung Hinkhom dan:**

Guwahati ahin, KWS, KSO le KWA hi a member kibulphu dan thakhat akijeh in, akikhen nachom aum dehpon, tunichan long del'a akichal jing thei hi Pathen ngailutna jal ahi tijong kichentah in akimui.

### **Kipana Thu:**

Houbung miten khatvei seh hilouva avel avel'a tahsan kitepna le tokhomna tampi ana kineijing vangin, thanomtah in akipang khom jingin, sum ijat itodoh vangun, lamchom chom in Pathenin phatthei eiboh cheh uvin, koima "hou-in sah jeh in ivaicha

taove"ti akijakhapoi. Hiche seh hilouvin tha le jung sen'a ho ajong koima tei-tei' tia kikou chom aki umlou vangin, mi tamtah tah thanomtah in ana kipangjing'e.

Hou-in kisah na a alungthim, atha, anei le agou, aphot tampi senga ngailutna neitah a pang mi tamtah aumin, chule panpina houbung hole mimal munchom chom a konin ana kimu jingin, Guwahati spirit dung jui'a amin akitahlang loujeh a kipah ho jouse le adang dangho jouse chungah seijoulou kipana akiphong'e. Tunin Hou-in thenso thei'a iumtah jeh un ikinepnao jal'a eipanpi jing'u Pathen thangvah nale loupina chang hen!

### **Khonung Ding Lamvetna:**

Tun Pathen in AHou-in Theng atungdoh tan, tua eihon ipi iboldiu hitam? Thanomtah a Pakai lengam a lhagao mangsa te huh doh nading'a pan hatah a ilah diuhi ibat'u lenpen hiding ahi. Chule ichenna Manipur, Nagaland le Assam gam sung ivet le ngaichat na atame. Themjilna alhasam in; Gale tol jeh le genthei hahsat jeh'a chapang tamtah India gam khoppi chom chom'a kisol'a genthei thoh ho donlou dailouva umdiu hitam? Ilah uvah thilpha aumpoi tiloi iumun, thilpha pha kon'a dinga ngai masa penchu, koi macha dang ahipon, nang le kei ihi. Pakaijin, eisemtah nomun, Aloupi na dingin eimangcha nom uve. Nang nanop hinam?????

### **Thuchaina:**

kinepna neitalouvin, thanopna jong neitalouvin, mi lah jenga jong lhanom talou, ama chang changa hinkho mangjong ki

umda ponte. Ahin Pakaijin genthei hahsat laitah in Hou-insah nading Mang eipeuvin, lunglut tah le thanom tah a akiboipi jeh in, igenthei najouse akisumil'in, tunin hiche mang chu aguilhung in KIPANA lentah eipe taove! Pakaijin ikinepnao asubulhit in, ihatlou naovah eikaithou taove. "PAKAIJA KINEM TE AKISUJUMPON, AKIDONDAPON, ALHAHSAM NAOVAH KAITHOU VIN AUMTAOVE!!!!. Hungun sopi ule nao "PAKAI CHU IKINEPNAO HIJING HEN!"

### KWS(G) LAMKAI MASAHO

---

#### 1998: KWS(G) Executive Members

Chaplain/Chairman	: Rev.M.Haokhothong
Secretary	: Helun Hangshing
Asst. secy.	: Nengpi Lhouvum
Finance Secy. Cum Trea.	: Miss Nemboi Manchong

---

#### 1999: KWS(G) Executive Members

Chairman	: Pu V.Changsan
Seretary	: Pu L.L.Khongsai
Fin. Secy/Treasurer	: Pu D.P.Haokip
Women Representative	: Pi Nenghoi Manchong
Youth representative	: Gl.Helun Hangshing

---

#### 2000: KWS(G) Executive Members

Chairman	: Rev.M.Haokhothong
Secretary	: Pu L.L.Khongsai
Fin. Secy/Treasurer	: Pu D.P.Haokip
Women Representative	: Pi Nenghoi Manchong
Youth representative	: Gl.Lalboi Haokip

#### KWS(G) Church Building Committee

Chairman	: Pu J.K.Haokip
Secretary	: Pu Tongpao Haokip
Fin. Secy/Treasurer	: Pu Haokholun Kipgen

---

#### 2001: KWS(G) Executive Members

Chairman	: Rev.M.Haokhothong
Secretary	: Pu L.L.Khongsai
Fin. Secy/Treasurer	: Pu D.P.Haokip/ : Pu J.K.Haokip
Women Representative	: Pi Nenghoi Manchong
Youth representative	: Gl.Lalboi Haokip & Ng.Kimneo Haokip

#### KWS(G) Church Building Committee

Chairman	: Pu Thangkhomang Haokip
Secretary	: Pu Jangmang Dounel
Fin. Secy/Treasurer	: Pu Haokholun Kipgen/ : Gl.Paoboi Lungdim

---



---

#### 2002: KWS(G) Executive Members

Chairman	: Pu D.P.Haokip
Secretary	: Pu L.L.Khongsai
Fin. Secy/Treasurer	: Pu Helhun Kipgen
Women Representative	: Pi Ngailhing Haokip
Youth representative	: Gl.Lalboi Haoki & : Ng.Kimneo Haokip

#### KWS(G) Church Building Committee

Chairman	: Rev.M.Haokhothong
Secretary	: Pu Jangmang Dounel
Fin. Secy/Treasurer	: Gl.Paoboi Lungdim

---

#### 2003: KWS(G) Executive Members

Chairman	: Pu D.P.Haokip
Secretary	: Pu L.L.Khongsai
Fin. Secy/Treasurer	: Pu Helhun Kipgen
Women Cordinator	: Pi Ngailhing Haokip
Youth o-ordinators	: Gl.Marwyn Singson & : Ng.Kimneo Haokip

#### KWS(G) Church Building Committee

Chairman	: Rev.M.Haokhothong
Secretary	: Pu Jangmang Dounel
Fin. Secy/Treasurer	: Gl.Paoboi Lungdim/ : Pu Tongpao Haokip
Church Building Construction Helper	: Gl.Lalboi Haokip

---

#### 2004: KWS(G) Executive Members

Chairman	: Pu D.P.Haokip
Secretary	: Pu L.L.Khongsai
Fin. Secy/Treasurer	: Pu Helhun Kipgen
Women Cordinator	: Pi Ngailhing Haokip
Youth o-ordinators	: Gl.Bijumoun Lungdim : Ng.Kimneo Haokip

**KWS(G) Church Building Committee (2004)**

Chairman	: Pu Atong Kuki
Secretary	: Pastor Jangmang Doungel
Fin. Secy/Treasurer	: Pu Tongpao Haokip
Church Building Construction Helper	: Gl.Lalboi Haokip

---

**2005 : KWS(G) Executive Members**

Chairman	: Pu D.P.Haokip
Secretary	: Pu L.L.Khongsai
Fin. Secy/Treasurer	: Pu Helhun Kipgen
Women Cordinator	: Pi Ngailhing Haokip
Youth o-ordinators	: Gl.Hemkholen Haokip & Ng.Rebecca Changsan

**KWS(G) Church Building Committee**

Chairman	: Pu Atong Kuki/ : Pastor J'Mang Doungel
Secretary	: Pu Hemang Dimngel
Fin. Secy/Treasurer	: Pu Lunminthang Kipgen
Church Building Construction Helper	: Gl.Lalboi Haokip

---

**2006 : KWS(G) Executive Members**

Chairman	: Pu D.P.Haokip
Secretary	: Pu L.L.Khongsai
Fin. Secy/Treasurer	: Pu Helhun Kipgen
Women Cordinator	: Pi Ngailhing Haokip
Khanglai lamkai	: Evan.Thanglal Haokip

**KWS(G) Church Building Committee**

Chairman	: Pastor J'Mang Doungel
Secretary	: Pu Hemang Dimngel
Fin. Secy/Treasurer	: Pu Lunminthang Kipgen
Church Building Construction Helper	: Gl.Lalboi Haokip

---

**2007 : KWS(G) Executive Members**

Pastor	: Rev.M.Haokhothong
Chairman	: Pu J.Lhungdim

Vice Chairman/Missionary Board Chairman	: Pu D.P.Haokip
Secretary	: Pu L.L.Khongsai
Asst.Secy./Missionary Board Secy.	: Pu Seikhohao Sitlhou
Fin. Secy/Treasurer/Missionary Board Treasurer	: Pu Helhun Kipgen
Nupite Lamkai	: Pi Ngailjahat Kuki
Khanglai lamkai	: Evan.Thanglal Haokip/ : Gl.Paocha Chongloi
Care Taker cum Chowkidar	: Hatpha Haokip

**KWS(G) Church Building Committee**

Chairman	: Pu Atong Kukil/ : Pu Tongpao Haokip
Secretary	: Pu Hemang Dimngel
Fin. Secy/Treasurer	: Pu Lunminthang Kipgen
Church Building Construction Helper	: Gl.Lalboi Haokip

---

**2008 : KWS(G) Executive Members**

Pastor	: Rev.M.Haokhothong
Chairman	: Upa J.Lhungdim
Vice Chairman/Missionary Board Chairman	: Pu Seikhohao Sitlhou
Secretary	: Pu L.L.Khongsai
Asst.Secy./Missionary Board Secy	: Pu Khupmang Doungel
Fin. Secy/Treasurer/Missionary Board Treasurer	: Pu Helhun Kipgen
Nupite Lamkai	: Pi Ngailjahat Kuki
Khanglai lamkai	: Gl.Paocha Chongloi
Care Taker cum Chowkidar	: Hatpha Haokip

**KWS(G) Church Building Committee**

Chairman	: Pu Tongpao Haokip
Secretary	: Pu Hemang Dimngel
Fin. Secy/Treasurer	: Pu Lunminthang Kipgen
Church Building Construction Helper	: Gl.Lalboi Haokip

---

---

**2009 : KWS(G) Executive Members**

Pastor : Rev.M.Haokhothong  
 Chairman : Upa J.Lhungdim/  
                   : Pu Sothang Haokip  
 Vice Chairman/Missionary Board Chairman  
   : Pu Sothang Haokip  
 Secretary : Pu L.L.Khongsai  
 Asst.Secy./Missionary Board Secy  
   : Pu Khupmang Doungel  
 Fin. Secy/Treasurer/Missionary Board Treasurer  
   : Pu Helhun Kipgen  
 Nupite Lamkai : Pi Nengjahat Haokip  
 Khanglai lamkai : Gl.Paocha Chongloi/  
   : Manga Haokip  
 Care Taker cum Chowkidar : Hatpha Haokip

**KWS(G) Church Building Committee**

Chairman : Pu Tongpao Haokip  
 Secretary : Pu Hemang Dimngel  
 Fin. Secy/Treasurer : Pu Lunminthang Kipgen/  
   : Pu Manglun Singsit  
 Church Building Construction Helper  
   : Gl.Lalboi Haokip

---



---

**2010 : KWS(G) Executive Members**

Pastor : Rev.M.Haokhothong  
 Chairman : Pu Sothang Haokip  
 Vice Chairman/Missionary Board Chairman  
   : Pu D.P.Haokip  
 Secretary : Pu L.L.Khongsai  
 Asst.Secy./Missionary Board Secy  
   : Pu Khupmang Doungel  
 Fin. Secy/Treasurer/Missionary Board Treasurer  
   : Pu Helhun Kipgen  
 Nupite Lamkai : Pi Nengjahat Haokip  
 Khanglai lamkai : Gl.Benjamin Lhungdim  
 Care Taker cum Chowkidar : Hatpha Haokip

**KWS(G) Church Building Committee**

Chairman : Pu Tongpao Haokip  
 Secretary : Pu Thonglet Mate  
 Fin. Secy/Treasurer : Pu Manglun Singsit  
 Church Building Construction Helper  
   : Pu Lalboi Haokip

---





# Redefining Christian Leadership

- Letkholun Haokip -  
Registrar, AICS, Aizawl



**Introduction:** Now and then, we hear the cry everywhere - from the religious, social, industrial, and even in the political world. "Give us leaders". My question is, do we not have leaders? How about our leaders? The answer is, we have leaders. However, many of them were human appointed leaders like Herod the Great who do not seek the will of God in his leadership rather trying to establish his own kingdom. People are crying for leaders who are appointed by God, who seeks the will of God in their leadership. As a result, Redefining Leadership is necessary. However, in this kind of short writing we may not be able to incorporate them all. Therefore, this article deals mainly with leadership in Christian ministry.

## Redefining Christian leadership:

Leadership comes from people trusting you and listening to your suggestions, advice and guidance. This trust comes from trust in one's knowledge and trust in one's motives. According to Robert Clinton, "Leadership is a dynamic process in which a man or woman with God given capacity influences a specific group of God's people toward His purposes for the group".

Christian Leadership carries a heavy burden of responsibilities, but at the same time, it can be exciting and stimulating. However, for many, the word leadership connotes power, authority, honour, prestige, or personal advantage. Nevertheless, Christian leadership essentially involves service. When we consider the church and church-related institutions, we grasp the concept of service. For Christian leadership is not about title, position or flowchart. It is service to God and service to His people.

Anthony D'Souza in his book "Leadership"

defines Christian leadership- *it seeks to be of service, rather than to dominate*. This reflects Jesus Christ's word, "Whoever wishes to be first among you, shall be your servant, even as the son of man came not to be served, but to serve, and to give his life a ransom for many". (Matt. 20:27-28). Paul became a great Christian leader when Jesus Christ captured his heart and mind.

## Some Essential Qualities in Redefining Christian Leadership:

**1. Leadership and Character:** Obviously, the first quality is character. Book T. Washington states, "Leadership is built from deep character". Our character determines who we are. A leader without good character is life without backbone. However, my question is, what exactly is character? Is it goodness or holiness? Is it morality linked with honesty and integrity? According to P.K.D. Lee, "Character is the ability to love others". Love is a commitment to do good to others. This commitment makes people

trust our leadership. The word 'Love' enables people to fulfil their potential that is within them.

**2. Leadership and Vision:** One of the essential qualities of leadership is vision. Warren G. Bennis states that "Leadership is the capacity to translate vision into reality". Successful leaders all have visions and dreams of what could be. They have absolute and total personal belief in those visions and dreams. They are confident in their abilities to make extraordinary things happen. Christian leaders' should have clear visions from God, to serve His people and to work with them.

**3. Leadership and Trust:** As mentioned above, Leadership comes from people trusting you and listening to your suggestion, advice and guidance. To develop trust, the leaders have initially practice trust. Without trust and confidence, people don't take risks. There must be a transparency of relationship between leaders and staff. There are no unnecessary secret. If there has to be a secret, it must be explained why it is a secret.

The Leaders Show Trust by Delegating, While delegating we should ensure that we delegate with enough authority for him/her to take the required decision for the task. Certain amount of trust and freedom must be given, otherwise delegation becomes slave driving. Just as the slave has no choice, the employee also has no choice.

**4. Leadership and Style:** There is no universal ideal leadership style. The Leaders adapt his/her Leadership style.

The leadership style, which we should use, depends on the nature of the job, the environment, and the nature of the work force. For instance- If the workers are unskilled, with little knowledge, ambition or motivation. The leadership style has to be more directive and authoritative, with less freedom. Closer supervision and detailed programming of jobs are needed. On the other hand, if the workers were well educated, and can comprehend the vision of the organisation, the style has to be more participatory and less authoritative. Above all leadership is a lifestyle that needs to grow. It is a lifetime of God's lessons. Yours will be unique. God will take you through several leadership stages on your way to a lifetime service. Warren Bennis states, "Leaders learn by leading and they learn best by leading in the face of obstacles".

**5. Leadership and Concern:** As a Christian leader we should have a pastoral concern for people. This is the teaching given to us by Paul, that we should look after the interests of others and not of ourselves, (I Cor 10:24). We have to be like parents to our people. Just as parents assist their children in planning their careers and future, we should do the same for our people. In general, people look for promotion and advancement in their careers. They expect some security and certainty in their jobs. Realizing this, we as a leader should plan their future and show all that is necessary to achieve it. We must let people know their future in advance, so that they can take necessary decisions accordingly.

**6. Leadership and Conflict:** There will be conflicts. These conflicts arise due to differences in perceptions. Each individual's senses are conditioned by his/her past experiences, his/her present circumstances and his/her future aspirations.

Conflicts are not necessarily harmful. Conflicts are a sign of health, showing that the people are emotionally involved with their works. Such conflicts, if handled well, bring many improvements in practices and procedures within the organizations. Recognizing this, some organizations structure themselves that conflicts are built in and are inevitable, forcing a thorough investigation of all factors before a decision is taken. As leaders we should encourage frank sharing of views without promoting the exchanges to become personal.

**7. Leadership and Humility:** One of the most essential qualities in Christian Leadership is humility. Most will agree that Jesus calls his followers to serve with humility. Humility is essential because our individual effectiveness is limited. What appeals to one person may be received indifferently by another. Our limited knowledge cannot comprehend the will of God in our leadership, so we must humble before God to discern the will of the Holy Spirit.

Humility is essential because our time to live and serve is limited. Our days are numbered. Despite the greatness of our work – and no work is greater than the service of God- the time must come when we will be forced to let it all go and die. It is no small thing to face this fact. Erik Erikson a psychologist talks of the “ego-chill” we experience when we talk frankly about the fact of our deaths. One day we will move beyond talking our death and actually die. That reality serves to humble even the most exalted among us. As a matter of fact, Commitment, carefulness and humility mark the life of all who truly honour God's call in their leadership. To sense the depth of such a privilege is to be stirred to gratitude and surrender, praise and prayer, faith and devotion, trust and obedience, humility and morality.

**Conclusion:** To sum up, having mentioned the above essential qualities, Christian leaders should keep the church's, the institution's and the organization's purpose in the forefront of all activities through functions such as goal setting, planning, organizing, programming, motivating, coordinating, and evaluating. By practicing these, I do believe, that, our leadership will make at least a little contribution to God whom we are working for, and to the people whom we are ministering. Thank you.



# Thoughts on Church Dedication

- Jamkholal (Lalboi) Haokip -  
Wokingham, UK



**Blessed are the meek, for they shall inherit the land** (Mathew 5:5); more than wealth, income and power, His abundant love shines upon the meek. From the very outset of our church building project to the final day of finishing touches, neither weariness nor desperation fails to stop us. Success in our endeavour is undoubtedly the manifestation of God's blessing.

Charity begins at home. According to 1 Corinthians 13:4-5, "Charity is patient, it is kind, it is not disrespectful, it is not angry". Indeed every household in our fellowship and every member played their part in their own humble ways. Such sacrifices and contributions probably led to the establishment of our church.

I am delighted to hear the good news about the dedication of the Church of Kuki Worship Service, Guwahati (KWS-G). I feel blessed and privileged today to share my wonderful experience as a member of this congregation. It is a matter of immense pride and an achievement for all the Kuki people: to own a place of worship in this strategically located beautiful city of the North East India.

When the building project began, it was difficult to imagine that the project could be accomplished in such a short period of time. It appeared that the biggest challenge was to involve everyone. Apparently, the generation gap among the members almost caused a rift between KWS (G) and Kuki Student Organisation, Guwahati (KSO-G). While the older members related

themselves more with KWS, the younger members were staunch supporters of KSO. However, the differences were resolved under the capable leadership and efficient management by the church executive members – this obviously came about through intercession prayers and reconciliation among the members.

Our prayers inspired us to launch a short term musical project. This definitely acted as one of the catalysts to bridge the generation gap. The objective was to produce a gospel musical audio album, mostly by the young members of KWS (G): in order to generate funds for the mother (church building) project. Later, it turned out that the significance of this venture was not so much in profit making; rather it was in its ability to unite young and old for a common goal. We found a shared interest in gospel music. But most of all, the selfless devotion and diligence of the members as well as the leaders remained the ultimate pillar of success.

On my part, I might not have lived up to the expectation whilst I was an executive member of KWS (G). However, on a positive

note it was a life changing experience for me. I have not only been able to learn from my mistakes but also got the courage to shoulder bigger responsibilities. I thank the Almighty for giving me a sense of direction. Finally, I extend my gratitude to the KWS leaders and members for accepting me as the way I am. Also my appreciation for their ceaseless prayers, love, affection, and guidance knows no bound. I sincerely hope and pray that our fellowship will stand the test of time.

May God bless us All



# Youth and Love

- JM Ngul KhanPau -

Colorado, USA

## 1. INFATUATION AND LOVE:

### Infatuation:

- Develops rather rapidly
- Based on limited characteristics
- Based on the emotion itself
- Is self-centered
- Is multi-person centered
- Changes rapidly
- Loses touch with reality
- Largely outward or physical
- Insecure/Insecurities
- Jealous/Possessiveness

### Love:

- Is grown into
- Based on the whole person
- Focuses on the person with whom you are involved
- Is other-centered
- Demonstrates a deep commitment to one person
- Is a gradual development
- Maintains balance of life and priorities
- Involved the total relationship
- Secure/Security
- Trust/Faith

## 2. THE DIFFERENCE BETWEEN LOVE AND LUST:

### Love

1. Love is patient
2. Love is kind
3. Love does not envy
4. Love does not boast
5. Love is not proud
6. Love is not rude
7. Love is not self-seeking
8. Love is not easily angered
9. Love forgives others
10. Love hates evil
11. Love rejoices in the truth
12. Love always protects
13. Love always trusts

### Lust

1. Lust cannot wait, it is impulsive
2. Lust is critical it wants its own way
3. Lust seeks more than it earns
4. Lust builds up self no matter who it hurts
5. Lust is easily threatened
6. Lust is disrespectful
7. Lust is demanding
8. Lust is moody and lashes out
9. Lust says vengeance is mine
10. Lust does anything to get its own way
11. Lust encourages lies and tries to hide sins
12. Lust doesn't care who it hurts; it wants its own way
13. Lust is jealous and suspicious

- |                           |   |
|---------------------------|---|
| 14. Love always hope      | 14. Lust says, you blow it you're out           |
| 15. Love always preserves | 15. Lust backs out when times are tough         |
| 16. Love never fails      | 16. Lust stops when self is not served          |
| 17. Love is unending      | 17. Lust lasts just a moment then flickers away |
| 18. Love is enduring      | 18. Lust is insecure                            |
| 19. Love is faithful      | 19. Lust will cheat on you                      |
| 20. Love is commitment    | 20. Lust is not trustworthy                     |

### 3. THREE KINDS OR LEVELS OF LOVE:

- LOVE BECAUSE: "I love you because"
- LOVE IF: "If you love me"
- LOVE ANYWAY/ANYHOW: "Loving always, self-giving love"

### 4. THREE STAGES OF FINDING LIFE-PARTNER: (Matthew 7:7)

- FIRST STAGE: ASKING STAGE
- SECOND STAGE: SEEKING STAGE
- THIRD STAGE: KNOCKING STAGE

### 5. ABRAHAM'S SERVANT'S METHOD OF FINDING ISAAC'S WIFE: (Gen. 24:12-52)

1. PRAYER (Vs. 12)
2. KNOWABLE (Vs. 14)
3. THE PERSON (Vs. 16)
4. HARDWORKING, DUTIFUL AND HOSPITABLE (Vs. 19-25)
5. THANKSGIVING (26-27)
6. VISITING THE GIRL'S HOME (Vs. 28-32)
7. PROPOSAL AND PURPOSE STATEMENT (Vs. 33-49)
8. PARENTS' APPROVAL (Vs. 50-51)
9. THANKSGIVING AND WORSHIP (Vs. 52)



# Ingredients of a mighty warrior

- T. Lhungdim -

**M**y wife returned from the service that Sunday (3 Sundays ago) and shot at me straight – “you missed a very good message today”. On the next opportunity I had, I downloaded the mp3 recording of the message Ms. Jaya spoke on that Sunday at the church we attend here. The message was on the 7 mountains. It was an excellent one. In the midst of her message, the kind of spiritual maturity Jaya exhibits attracted me to jot down these points. I would like to clarify that in all I say, I am included and lacks in all these myself.

## Command in the Word of God:

Her command in the word of God was simply awesome. She touched upon her Brahmin Hindu background, how she used to learn by heart chapters of the Bible, fearing her mother would throw away the Bible. She added that, she still continues to memorise Bible verses and these words of God stood by her at various kinds of situations. She made a commitment to read 20 chapters of the Bible everyday, stood by it, and finished the bible in 2 months. She said.. *“for lack of knowledge, people perish.. (the Bible).. we Christians lack biblical perspective of work....for lack of knowledge of the word of God (and His promises), we don't even know the authority we have over all mountains. Read the word. The word of God reveals everything to us.”*

**# Do we read enough-of our Bible? Many people reads the Bible just like any other book and more than us. How about us Christians, then?**

## Commitment for a daily date with God:

She has a daily date with the Almighty. Jaya

went a step further and keep a separate place for this date with her heavenly Father inside her house. She would daily read the word of God and talk to God at this place. Daily ! Yes, she had her share of hard times when she would not just feel like doing so. How did she handle such times? On days she felt tired and didn't feel like doing so, she would splash herself a full glass of cold water on her face, light all the lights in the room as if it was a Diwali and then pull herself to do it. Still, she would still read and pray to God. **She observed that one of the struggles with most people she mentor/counsel is that, they have a difficulty doing their daily devotionals. Many people struggles.**

*What her husband says about her... “Jaya you will compromise anything but you will never give up your time with God ”...to which she says... work out your salvation everyday, the bible says.*

**# how is our daily date with our Lord both on good and bad days, on days we feel good or bad?**



### **Praying warrior with a robust faith in Him:**

Jaya is a mighty warrior of God. She prays a lot and she have and exhibits a lot of faith. That says it all. She would pray-walk every morning for the people and CEO / seniors in her organization of about 25000 employees, where she is the only Christian (or probably she is not aware if there is any other). Due to this prayer 11 days after joining her organization, she was called to go to a senior person's home whose wife suffered from lumber puncture. They were a Hindu family and so she shared her testimony and she said she knew how to pray in the name of the only one name – Jesus Christ. They agreed and so she prayed for her. She was healed of the pain after she accepted what God told her that, He only can heal her. The other day she was on her way to office, a girl called her saying, "Aunty, this girl broke her ankle and

she is to undergo operation, please pray for her". She told about Jesus and how He can heal and prayed for her. That same evening at Andheri Station, the girl called her saying,.. "Aunty, my ankle pain is gone. Jesus has healed me".

### **# How is our prayer life & our faith – how do we fare?**

Lastly, it would not be wrong to say that Christianity is not lazy and casual. It is a lot more hardwork than we could possibly think. Shouldn't we be praying more than we do? Shouldn't we be emulating Jaya – her commitment, determination, hardwork, discipline, knowledge of the word?? These are the hallmark of a mature Christian. Let us have a re-look at ourselves once again. These are the ingredients of a mighty warrior.



# A Tribute to Kuki Worship Service (G)

- Kimchin Lhangum -  
E.A.C, Chirang



***“Rs. 3 per brick, 3 bricks for Rs. 10 so Rs 30 per month as Church Building contribution out of a pocket money of Rs 2000”***. This was the fate of most, if not all of the in-college members of KWS(G) a decade ago. Certainly, such a modest amount could never have contributed to the colossal structure of the Church that we see today. The subsequent Faith Promise of Rs. 100-300 a month out of a meagre resource of Rs. 5000 was only a grain of sand in the vast expanse of a beach. But those were offerings of a cheerful heart with a desire to offer more if it had more. No one can fathom what benefits have been reaped out of those humble endeavours. HE whose Greatness and Grandeur is incomprehensible is one who is easily contented. One’s little deeds for Him never go unaccounted. How else would blessings kiss one’s feet at every turn, why else would one be so favoured? It is true GOD is GOOD.

Today, we sit inside this beautiful haven, nothing less than a miniature heaven, not by virtue of the smooth, tiled floor or the perfectly-polished walls nor the impressive stairway but simply for the fact that the children have all gathered together with one heart and mind in the name of the Father. It is a wonder and a great one that too that the hopeless, directionless children with no available resources at hand, but not without faith, could miraculously set up a dwelling place for the Lord. Of course, our humble arrangement is not worth even His footstool and he requires no earthly shelter because His territory extends to the infinite horizon and Heaven is His throne. But He who looks at the heart searches for desire in us to do something for Him. Nothing can compare to the joy of the children being faithful to the father.

2005- the year the KWS(G) Church was first open for service. A commemoration

ceremony marked the occasion. Since then there have been wonders and miracles galore for the members. Be it spiritual blessings or other achievements, educational successes or job avenues, we are still counting. This church has facilitated the return of many a prodigal son, spiritual upheaval of many a downtrodden soul, bridged many a broken or on-the-verge-of-breaking relation, and reset on track the almost derailing Congregation. 2008-Decade Celebration cum Khanglai is still fresh in memory. Such a rich and fulfilling experience is a privilege of a lifetime in the true sense of the term. While I was thinking that anointment is only for prophets/priests/pastors, I got anointed for the Work of the Kingdom of God. Where else would I have got such a privilege? Who can deny the moral and spiritual high gained out of that very experience? We are still enjoying the good effects of it. One also cannot afford to forget the good that came out of the

Salvation Camps on every Good Friday & Easter. If one had missed the opportunity to go home during this welcome break from work on account of the Camps, there is not an iota of regret. The benefits accrued out of these sure are worth scarifying even bigger things for. Christmas and New Year are no exception. You are more at home in the right environment than being actually at home with your biological family. When you have elders and guides such as those in KWS(G), who provide you all the necessary inspiration, counsel, discipline, encouragement and example, no spiritual vacuum can exist. The spirit of oneness and self-less service to the Lord is the way of the Church. "From each according to his willingness, to each according to his capacity" is its modus operandi. There is no place for compulsion, no scope for blame-game. The good one does is the credit of all and likewise the wrong one commits is the fault of all. There is no You and no I, there is only We. When we laugh, we laugh together; when we weep, we weep together. Whether we rejoice or grieve, we take it all to the Father. Thus, no misfortune is too disheartening, no sorrow too bitter. At the same time, the least of good news is always an occasion for celebration.

To say, I have always been one of those regular church-goers; I have, in my humble capacity, been a part of many a youth activity; I have, to my best extent, associated myself with as many salvation camps/retreat programmes as possible at home and elsewhere. But nowhere else have I witnessed such an enlightening change

within me as in KWS (G). Whatever good things have happened to me, I believe, are in all manners the result of this connection. I can, in no way, take credit of any kind. If, today, I carry a contented heart or enjoy peace of mind, there is no other reason. I also believe that there are hundreds of others who share this sentiment with me. There are certainly many untold stories of what KWS(G) has done for us.

It feels awesome to be a part of this wonderful moment in history when we witness God's power and guidance in full. It is a time for rejoicing, a day to celebrate His goodness and faithfulness. Come, all you young and old, from north or south, east or west, come and see for yourself what the Lord has done for us. Who would have even dreamed of KWS, not to talk of a Church of our own 15-20 years ago? Yet, the Lord has done it. He has found a path for us in an uncharted map; He has given us a harbour to anchor. How many can boast of such a feat as ours? Indeed, we are most favoured. We have been chosen to be an instrument in the fulfilment of God's magnificent Plan. I wonder where His hand will lead us henceforth. My eyes cannot wait to see the unfolding of His Works in the days to come. Every knee shall bow; every tongue shall confess that our Lord is Good. We are reminded, "With God, nothing is impossible".

Being a part of KWS(G) is not a chance or coincidence. It is a destiny drawn by the One who has chosen you out of a multitude. You have been called to be a part of the most blessed bond. The sooner one realizes this

truth the better, or it will be too late even to regret. Time will take you on different journeys: yesterday you were an official part of the Congregation, today you are just one of its many visitors; you were juggling your time between job and church activities, you are now switching from job to job; you spent your Sundays in fellowships, meetings and practice sessions, you are now either doing paper work or attending to some other urgent business; you were singing and worshipping in church, you are now having to make do with humming to yourself or listening to music; you sang and prayed with others in a common tongue, you are now singing in or listening to sermons in foreign tongues; and the list goes on.....So, now is it. Let not this opportunity pass. Chances ought not to be taken for granted. Today I am missing out many things which you now

have. Life will never be the same for me again. However, the sweet memory of the times spent in KWS(G) still lingers in my heart and mind and there is no room for regret. Wherever I may be or whatever I may do, I will always go back to it in thoughts and memories. Today, I can testify to the fact that investment in the name of the Lord is the most profitable investment that can ever be. You sow in tens but reap in thousands. One truth I have learned is when you put God at the top of your priority list, you can be assured you too are ahead of others in His list. How can we expect the best from God when we give Him just our second best? Again, we may wish for this, we may long for that but our every desire/ plan is immaterial in the face of His Divine Purpose. He alone knows what is best for us. We should only surrender to His will and the rest will follow.



# Nangho Pathen Hing In-Theng Nahiue

- Rev Jangkhomang Doungel -  
Ex-Chairman, Building Project, KWS (G)



**P**athen In-theng kiti hi Church Building kiseina ahipoi mihem tahsa joh aseina ahijoi. Solchah Paul in Christa tahsan Houbung mithengte kom'a "Pathen hing Intheng nahiue nasunguva Pathen Lhagao achenchu nahet louvu ham? Pathen Intheng sumanga chu Pathenin ama chu asuhmang ding ahi." tin asej jin ahi. (1 Cor 3:16-17) Hinla, Church Building angaipoi kitina jong ahideh sampoi. Ajehchu, Church Building chu lhagao lam'a ikiloikhomna diu, Pathen ihoukhomna diu ahilouleh Pathen thupha kihilna mun dinga ngai khoh khat ahi. Hijongleh Pathen In-theng kiti hi ipi hija, ipi tabanga gelkhoh ngai ham tih hetchet angai ma man ahi.

## **PATHEN HING IN-THENG HETKHEL BAILAM:**

Pathen hing In-theng hetkhel abailamin ahi. Vet sahan Hou-In (Church Building) itipenu sunga iumteng ipi iti kium ji em? Kipaum tahkhatchu hiche Hou-In thenna (sanctity) pa hi amitakip in theitopson akinit jinai. Hou-In sungchu jana/ginna lentah akineijin; koiman chonset lunggel anei nom poi. Koiman thuphalou a seinompoi, thilphalou abolnom pon ahi. Khamna thei ne/don lamlendunga onleho jeng jong Hou-In sunga umdan phatah in machon nomjiue. Chep leh mom bolhon jong Hou-In sunga akibolpoi. Ahitheichan a lungthimpha leh lunggelpha gelpum in Pathen vahchoina leh Pathen thungaina akinei jin ahi. Ipi jeh ahi dem? Ajeh pentah chu hiche Hou-In sung (Building sung) a hi Pathen cheng ahilouleh Pathen um ahi itinao khat ahi. Hijeh a chu Hou-In sung hi athenga (holy) kigela, Hou Inn sung idalhah teng idei dei kibolkit, inop nop kiseikit, idu du kinekit, ivet nom nom kivekit ji ahi tai. Ahileh, Pathen chu hiche Hou Inn sunga chu cheng mong hi nan tem?

Ahipoi! I Bible un ipi iti eihil um? Acts 17:24, "Vanoi leisetle asunga thil'um jouse sema Pathen chu vanle lei Pakai ahin, mihem khutna kisa In Hou-In (buildings) ah acheng poi" tin asejin ahi. Chusang chun, "Nangho Pathen Inn theng nahiue ve" (1Cor 3:16) tin asejon ahi. Chonset kisahna neija ahinkho Pakai kom'a kipelutho, Christa nungjui tahsanho sunga chu Pathen hing lhagao chenga hoilai munleh aphot jouse'a thenna hinkho leh Pathen deibanga umding hi Christian te ichonna diu doljoh ahi. Nang leh kei tahsahi Pathen chenna In-theng ahi joi.

Pathen hing In-theng hetkhel abailame! akitilona jehchu Pathen In-theng kiti hi "Church Building" pa hai? Or "Mihem tahsa" (Body) kiseina ham ti ihetkhenlou jeh'u ahi penne. Mitamtah in hichehi akihe dohji pon, Pathen loupina eiho akonin akimudoh ji tapoi. Hijeh a chu Pakai amatah in Hougut/Houlamkai (religious leaders) hokoma ana sei chu, "Hiche Temple hi suseuvin nithum kah'a katundoh kitding ahi." (John 2:21) Hichu Jesun amatahsa (BODY) anaseina ahi. Atahbeh in Jesu chu

amanun, Cross ah akhenbeh un, athat un, chuleh lhan'ah avuijun; hinla nithumnin athilah a konin ahung thoudoh kit tai. Solchah Paul'in hiche thudol kichenin anahen, Corinth Houbung (Christians) ho kom'a anasei chu: "Pathen hing In-theng nahiuva nasunguva Pathen Lhagao achen chu nahet louvu ham? Pathen Intheng sumanga chu Pathenin ama chu asuhmang ding ahi." tin ana hilchah in ahi. (1 Corinthians 3:16,17) Chuleh 1 Corinthians 6:19-20 ivetleh, "Ahiloujongle Pathen a kona naneiyu Lhagao theng nalung sunguva chenga chu natahsau hi a In-theng ahi ti nahetlouvu ham? Nangho nanghoa tum nahi pouve; nangho mankipa kichosa nahi tauve, hijehchun natahsa chunguvah Pathen choianun". Hichun avetsah chu mihem tahsa hi Pathen In-theng jana neitah leh kituptah a hinkho man angaidan eihet sah un ahi.

Hijehchun sopiteho, eiho Pathen Inntheng ihieleh, akisuthengsa (SANCTIFIED), atheng (HOLY) ihi taove. Ajeh chu Pathen theng lhagao chu isunguva cheng a nitin hinkhohi apuijing ding ahi. Hijeh chun, Pathen In-theng ihinau photchetsahna lampi anojakipe hobanga ichon hinam ti kikholphauhite:-

### 1. UMNA MUN JOUSE A THENNA HINKHO MANDING:-

- In umna mun'a jong then ding.
- Bazaar ikaina mun a jong then ding.
- Ikholve namunho a then ding.
- School/college ikaina muna jong then ding.
- Inatohna muna jong then ding.

- Hou-in ikaiteng jongleh then ding.

### 2. PHAT JOUSE A THENNA HINKHO MAN DING.

- Phatjouse a christian hi angaije.
- Inun ikhan ikhosah dan (lifestyle) christa kipana thupha toh kitoh hinam?
- Sunday Christian, Christmas Christian, Good Friday Christian atihou, nikho poimo kimanna ho a Christian hija; anikho akichai teng ageina lam kihekit talou mi akitam nom in ahi.

### 3. HINKHO KICHEH MANDING.

- Pathencha ihitahleh kichehtaha Pathencha hi angaijin ahi. Phatlhem nahinkhohi kichat um tahahi.
- Bible in Lumla lumlou votla votlou ati ho chu adinmun u kichat umtah ahi. "Keiman nathilbol kahenai, Nangma votla navotpon, sa la nasapoi; navotle votngalin, nasatle sangal le chun pha kasha ahi. (Rev 3:15)
- Bible in miphalthem (HYPOCRISY) ati hotoh bahlou ding ahi. Miphalthem hon vang leisetna mihem pachatna/ seiphat kilo na bouva umjiu ahi. (Matthew 6:5; 6:16, etc.).
- Hitabang miphalthem hochun midangjong damun/gotna mun'lama midangjong apuilut thajiuve. (Mat 23:15; 24:51)

#### 4. NATAHSA VENG TUP MIN.

- Christa thisan lutaha lhatdoh ithah jehun eiho eima'a dia hing hitalouva Christa dia hing joh ihu taove (1 Corinthians 6:19,20). Pakai Christa chu Lengleh lamkai pipupenna ineijing uva, eima lungdei hilouva ama lungdei bang a hinkho iman johdiu tina ahi.
- Pathen Inntheng subohthei jatchom chom Jachep, Khamnathei louho'a lop leh, Juneh motchon ho ibol loudiu tihi Pathen In-theng ijanau dihtah photchenna ahijoi. Hitabang bolho chu lhagaulam damtheina keu hilouva tahsa damtheina jong ahi. Medical leh scientific fact hojeng injong Ju (Alcohol) hin, Thin (Liver) leh Kal (Kidney) asuhset thei ahi ti eihilun ahia.
- Na tahsa Pathen Inntheng ahi nahetleh phatecha naventupma najabol angaijin ahi. Khutileh damjong nadamsot ding; nom nasaha Pathen umpina nachan jing ding ahi.
- Pathen In-theng chu nahi tah leh natahsachu Pathen minloupi nading a namanchah ding angaijin ahi.

#### 5. BOLDING A PHA

- Hou-In sunga naboldia nadeilou thilphalou ho mundang a jong boldan.
- Hou-In sunga naboldia nadeiho thiphaho chu mundang a jong

boldohteigo jingin.

- Hou-In sunga naseidia nadeilou thilphalou ho mundang a jong seidan.
- Hou-In sunga naseidia nadeiho thilphaho chu mundang a jong seijin.
- Hou-In sunga nageldia nadeilou thilphalou ho mundang a jong geldan.
- Hou-In sunga nageldia nadeiho thilphaho chu mundang a jong geldoh jingin.
- Hou-In sunga navetdia nadeilou thilphalou ho mundang a jong vetdan.
- Hou-In sunga navetdia nadeiho thilphaho chu mundang a jong ve jingin.

“Chuti ahijehchun, sopite, Pathen lungset vanghin natipumpiu chu longlhen thengtah gan kihinglhaa bangin Pathen lahthei doltahin Pathenah kipeuvin, tia kahil nahiuve. Hichu nalunguva nahounau ahi. Chuleh nangho tulai vannoi leiset chon hin chon hihun; Pathen lungdeilam, hichu apha, lahtheile phat chamkim hi ipi ahi, nahetdoh theina dingun, Lungthah kengunlang Limchom pu'vin” (Romans 12:1,2). Pastor, Missionary, Evangelist, Houbung lamkai, Christian Office worker, Christian Nurse, Christian Doctor akoihijongleh itahsauhi longlhen thengtah gan kihinglha banga Pathen lahtheidol tahleh thengtah a Pathen angsung a ikipehluh thah kit uva Pathen In-theng ihinau kithah vetphat kit angaijin ahi.

Christa tahsanchateho kiloikhomna munding KWS(G) Church thenso/hongdoh theija Pathen vangbohna ichannau banna, Pathen Hou-In theng ihinau athaha semphakit dingleh ama deilama hinkhotheng jong mangtheidin Pathenin Houbung mipite vangboh jomjing taken Amen.





# Jehovah Nissi- Pakai Chu Kaponlap Ahi

## (EXODUS 17:15)



- Pi Khuolneihmoy Khongsai -

**K**um soma (10) sung Pakai Hou-in sa'a ihung kisah lel jou uva, Hou-inn thenso thei ding a iumtah jeh un Pathen kathangvah e.

Guwahati ahin kum som le ni (12) tobang Christian hinkho lampi ihin jotkhom naovahin, inung vet le Pakai ponlap kidom sang jing chu akimu theijin, Pakai khut hattah in eilamkai jing uva, Akhut ban jetlam in eihoi jing'u ahi akimutheije. Hiche Pakai letna noija umhi ahi, nom isah nao jeh. Hiche hi ahi Guwahati a kona ipot doh jiteng uleh, ihin lhangai tun tun jiu chu. Koima cha lenjo, neojo beihel'a hahsat genthei ikithoh huvin chule kipa thanop nikhon jong ikipah khom theijuve. Christa tibah khat cheh ihinao photchet nan ipang khom thei cheh uve. Ipan nathei cheh uva, koi engkhoh louva thil ibol uhin, Christa a ikipum khat nao avetsah in ahi. I-Hou-in sah na jeng uva jong, lo-sang injong, asang lou in jong, Pathen in ei Hou-pang bang cheh in ipang cheh uve. Miho hinvet ding in jong aching, athem i-umpouvin, abolthei jong i-umchom pouve. Ahin Pathen in imacha louva kigel tehi, eina man chah'u ahi. Hatlou le lhasamte, koimacha sim-a-tai ihilounao tah ahin Christa thahat akitahlang hoi deh'e. Pathen in ihat lou nao hi, ihat nao eiso sah taove. A loupi AMA bou ahi.

Pakai chu iponlap u ana hi khah jeh in, Aman hichan hi eihinlhut u ahi. Ihatmo nao a jong, kitho u hitin, Pakai ponlap domsang jing uhite. I-lamkai hou jong ahatmou alhah sam

kom'u jongle Pakai ponlap adopsang jing thei nadiuva, thahat pe a pang ding in ikitem cheh uve. Israel te, Amalek tetoh akisat uchun Mose khut akhamtan, ahin Aaron le Hur in akhut khat cheh adop peh lhon jeh'a Amalek te ajou chu geldoh jing uhite. Eihon jong Pakai ponlap idop sanlai sungun, galjouva imachal diu, ahin kichoitho sah a, Pakai polap dopsan ding isuh mil niuva pat, ilhahsam u kipan ding ahi ti sumil poute.

Ikipat uva pat in hahsatna jat chom chom ihin tohpeh uve. Ikai khom masat nao Satribari Christian Hospital Chapel chu, ana adam lou ho ding gelnan, ithanop bangun khong jong voh phal ana hipon, chule Christmas ho, Camp le retreat ho inei nom kom jong ule lamkai ho chu, lung gimtah in amun ding hollin, ana lhai le jiuve. Hitia mun tinna mi neisa in le gam ana kiman chah jing laichun, ilung sung akap in, itih tah le eihon jong ihin nei thei diuven tin aki galdot ji-e. Thile manna ito kom jong le ngaichat nachu asang deh ji-e. Hiche chun lungsunga pohnat nale gelkhoh na eipeuvin Pathen koma tao nale tha le jung sum le pai ihin sepkhom taove. Chule keng le kang a golle pai Houbung dang dang honjong, Pathenin gelkhoh nale ngailutna apeh dung juijun, eihin kithopiuvn ahi. Hitihin, Pathenin alungsetna chu ichung uvah letset in

eihinbuh lhah peh taovin, tunin A-Hou-inn theng eitun doh peh taove. Athahat le Athil boltheina vah choijute.

Guwahati hi Pathen in phatthei eiboh nao mun ahi. Amitakip, incheng hihen, nungah gollhang ho hijong leh Pathen phatthei ichan uhi simjou hoi ahipoi. Phattheina ka tihin lhagao lam chule tahsa lam anini'n ahop'e. Khangthah te natohna mu atamtan, danthenga kichenna nei jong phabeppi aumtai , chule fulltime ministry dinga kipe doh jong li (4) tobang iumthei taove. Hijeh chun hiche Pathen in phatthei ei bohnao mun'a hi nomsa'a mongden lou'in, maban chal'u hitin, Christa dingin theitop son, satan lenggam chudoh uHITE. Pathen'n eikoi namun cheh uvah Ama dinga 'Chi' le 'Vah' a pangthei cheh ding'n kigong uHITE. Pathen phattheiboh ichan uhi eiho ding keo hilou in' imun cheh uvah midang ho dingin Pathen phattheiboh achannaogahiu hite.

Tuni hi kipa nikho ahitoh kilhon in i-Houbung mi chankhomp, hiche nikho hi munom'a ahinla ana mujou talou sopi

amollem sa ho geldoh louthei ahipon, kipana ho jong, mihing hinan lunghelna toh aki chohhel jitai . Amollemsa Upa V.Changsan, Upa Sehhopao Thangeo, Pu Thangkohen Thangeo, Pu Mangchung Haokip, Pi Lhingjalam Khongsai, Pi Neichong Lhouvum, Pi Ngailhing Haokip, Gl.Robert Kipgen chule Ng.Lhingboi Thangeo, amaho cheng sehi lungin asumil theipoi.

*Hungun, hungun, hungthouvun!*  
*Sopigolngai cheng ho,*  
*Ina ngaleljing'u, i-Hou-inn lutdingniu,*  
*Tunin ahunglungtai.*  
*Kipah khom utin,*  
*Pathen vahchoi la sakhom taohite!*

Ana chemasa ngailut Houbung mite ho, tuni hin hiche i-Hou-inn diuva nathao, nalung gel'u, nasum napai'u chule natao nahou, kagel doh jinguve!

KWS(G) te ding in Pakai chu IPONLAP'u ana hijing bangin, tule atonsot atonsot chan geijin, hijing jeng taken . JEHOVAH NISSI!!!



# Neocha Chunga Pathen Loupina Kiphong Ding

- Manglun Singsit -

Treasurer KWS(G) Building Committee



**P**athen thilsem laha aneopen holaha kiseijing "SIHMI" hojengin jong chuhlai leh nipi lai tenga nehding ninghling setnin akikholkhom theijun, lunggel themtahn, alamkaidiuvn aluboh (Leader) jong akisemdohun, Pathen thilsem Leinoi Lei chung kiselna omphon amangun, Pathen loupi na aphongdohun ahi.

Thilsem hojouse laha, akidang pen khat leh Pathen lunglai sunga cheng jing khatchu, amalim bang banga asem leiset "MIHEM" ahi. Thilsem jouse laha lamkai thunei ding chuleh ajemhoi dingleh aloupina phongdoh dinga asemsa mihem apehdoh ahi. Hitobang taha, chanvou loupitah ama noi doudinga chanpha kipehin chanpha aso dohsah jing hinam!!! Pathen nin Bible muntamtaha "HOUBUH-IN" tungdoh dingin lhendoh ISRAEL nam mite thumop anapejengin ahi. Peter hengah ka "HOUBUNG" katundoh ding ahi tin thupeh anasem pehin ahi. KWS(G) Pathen phatna jalla alen aneo alhom atam khentum umlouva lungkhattaha ipan khom nao limleh mel a mudohtheija umdoh chu Pathen "HOU BUH" isahdoh theiju hi ahitai.

Pathen thilsem jouse chungu, aloupina phongdoh dingleh, Pathen Gou chan, chana dingin alen aneo khentum aumpoi. Khentum umlouva Pathen houbuh sunga hunglha jouse chanvou dihtah changthei chehdengin malam galdot jingute. Pathen Houbuh limle mela imuthei laisen ipan khom nao khompi, Pathen jala ahatjing nadingin taonan panla jing ute.



# Tonsot Gou Nangbou Nahi

- L. Margerete Haokip -



**M**ihem hi inu oisung a pat naosen a ihung pen u ahi, naosen ihi lai uvin lung khamna le lungdongna akihekhapon ahi. I hung kikhan let chan in ni le lha, kum le kho ahung kihei in phat a chejing in ahi.

Hiti bang chun kei jong hi kaneo lai in lungkhamna le lungdongna kahe khapoi, Chun le Jo ang sunga kipah le nomtah in hinkho kanamang in ahi. Hiche lai a kanalung gel chu "Kanu le kapa in kei eidalhah lou ding, amani chu thi thei lou ding in kanageljing in ahi.

Chanu changkhat kahi in Kapa in eingailun eilungset lheh jenge, hichu Paa in acha alungset ding dol ahi tin kanala in ahi. 1st Oct. 2009 in kapa aleiset hinkho abei in hiche nia pat chun innsunga kaana, lhasetna, lunghemna, puldounan eilon khum un ahi. Kabon chaovin lungmonna ding kahol cheh un ahi. Abangkahle i innkom ahiloule i sopi eingailu pen koma kiche le lungmona kimu dingin kagel in, ahivangin lungmonna mong mong kamu joupoi. Kapa adam lai a aum chan, eihou lim pi ji naho kalung mit in ahung lang jin ahi. Hiche teng chuleh kathoh thei jipon ahi. Lungmonna kiti him him kanei pon ahi. Hiche phat in kalung'a hung kilang khat "Ka chapanlai lunggel toh anabang pon leiset mun hi eingailu pen toh jong kikhen namun anahin ahi. Phatle nikho ahung che toh lhon a innsung a thina manna ahung lhun phat a kahin het chen ahi". Hi leiset hi lungdongna le kana bou ahi, Lenkhom a mitlhi lonna le

kana mun ahi; eingailu sopi toh kikhenna mun ahi, leiset a um jouse chu mang ding ahi.

"Na lungkham na jouse Pathen ang ah seplhan...", taona lolhin sahpen Pathen kom'a lhamonna ka thum e. Kapa athinungin kalung gel chu kappa kipahtah a um hinam? Kapa in keiho chu eigeldoh jing u hinam? Ahiloule eiheimil u hitam? Kapa in eiheimil khah ding chu kagel ji teng kalai anaji lhehe.

"Leiset'a kipana ka hollai hin ei huhhingpun eikou ngailutna in lei kipana dalhan ka tahsantai van kipana kei'a ana hitai" Hichea pat in kappa jong Pathen intheng sunga kipahtah a aum ding katahsantai.

Hebrew 1: Tahsan hi kinepna thilho hetchetna mulou thil aum monge tip hot chennaahi.

Leiset mihem kihina jal in tahsa lang in Pathen lam ah kahat tai kitijong leh lhepna tamtah ichunga ahung ji tengle lhagao lama akilhasamji tai. "Rome 8:26-27" "Psalm 24:6 – Pakai holjing te chu akhang u chute chu ahi, Jacob Pathen mai vejinga holte chu chuti ahivu." "Psalm 23:3 Pakaiyin kahinkho

akiledoh sah kit jin, amamin khohsah jal'in lampi dih jenga eipuiye."

Tahsale lhagao pumpia Pathen kaneiya kon in lungmonna kamu e. 2nd Corinth 1:4 Keihon Pathena kona lungmona kaneiyu, hiche lungmonna chu hesoh gentheiya um teho kalungmonsah theina dingun, hesoh gentheina lah-a jong aman ei lungmonsah jing jjuve. "Huhhingna chu laltouna atou I Pathen le kelngoinouva ahi; LUNGMONNA LE KIPANA Jesu Christa a kon tonsot tonsot a um ahi". Hijeh chun tonsot gou; tonsot hinna Jesu Christa bou ahi.



## KWS (G) Lachoina

- Thongkholet Mate -



*Kolninou asoh tai, Kuki nam mite din Guwahati tolpia  
Thouvun, jingkah daitwi abei man, aman eipeh u na tong'u te.  
Khang'ol cheng lungkitoh in, nilhah vaichephat anai tai*

*Vo chung Pathen, ajung jam nao tin chengah,  
Hiche nam mite hi phung vuh in.  
Phungol cheng selung kitoh in, twi bang alongkhom un,  
Na lengpi leiya din ahung kalsong taove lung kitoh in.  
Nalal touna vanchung sangpen a kon, achung uvah, hinjuh sah in phatthei na go hong*

*Kolgam; vai gam ma bolkhompi anam mi teuvin,  
Hingaldoh unte KWS Guwahati  
Muthim gam salvah din, ateh a khang, khangdong ten jaila'n a oijui.  
Achung uva hinjuh sah in; phatthei na go.*



# Kuki Worship Service Phachom Am?

- Martin zairem Hengna -

**M**ihem koima ahinkho dinga kisalet lou aumpon, akhonung hinkho ding gelkhoh lou jong koima aumpoi. Hijeh'a chu mihemkhat kiti moh hin theilou, changa leiset a khosa thei hilou lungdon khoisat na aneithe, heng le kom ngaicha jing chuleh alungdon nem pi ding angaichat jing ahi. Hijeh'a chu mihem te kilam hilna ding, akipui jang nading chuleh lungdon khoisatna gama kinepna neipuma ahin thei na din tonsot kipana thupha jesun ahin potai. Kuki te lah'a jong kipana thuphan eihin phauvin tun hiche thupha jal hin kinepna le khantou-machal nam le gam sunga ahung umin het manlou vin khopi le tolpi sungah lekha sim, service bol chule kivei mi tampi ium tauvin, hiche ho khankho le khonung ding gel khohna ananei lamkai masa hon kidatkhen na umlou K.W.S. ana boldoh ui. Heche K.W.S. hin phatchom eipeh mongu nam veo hite.

## **Changval dia phachom :**

Mihem koima achamkim(perfect) aumlou na banah, huhhingna chan kikop thei ahipoi. Khopi, tahsan lah hithei atahsan lou lah jong hithei na muna mihem Kuki chapa-chanu aumteng amasapena ngaichat chu pathen thu'a akai hoi le apui hoi ding amihem chanpi, asopi angaichat ding chu seilouva het ahi(pahcha jong tui aki chaplouteng amoul theiye).Hitobang pathen thu le la a akaihoi ding asopi u le nao ngai cha hodin K.W.S. hi lungngap na anei thei ahitai.

## **Changval dia khantouna:**

Khopi a um atamjo lekha sim ahin, alekha simna ban'a japi le ama changval'a aphot chompi thei tampi Houbunga konin akilam doh theiye. Vetsahnan mi khat chu houbunga alhat teng akingaina thei ding nu le pa, loi le gol pha kimudoh nan aneiyin, kikhop khomna'a chanvou ahung chang jin ahi. Hiti ho'a kona chu mihem khat chun mai ngamna, lungletna,minejouna, kivaihom

dan, chuleh ahideh'a nun le khan akijildo theiyin ahi.K.W.S. um hih leh ahi deh'a khopi a um simlai hodia hitobang kijil dohna chu um jong leh ahi deh'a kuki hodia hahsa ding ahi.

## **Jalhang dia phachom:**

Alhangpi'a seidingin K.S.O. leh K.W.A. um jong leh, K.W.S hi ana um hih leh jalhang hinkhoa kimanchah naho hi hoi le kitup sel'a ache lhah jing ding hi tahsan um jong leh ahah sat na tampi jong aum ding tahsan ahi. Ajeh chu jalhang kiloikhom na dia kimuto jing le ki khopkhom jing chu machal na dinga ngaikhoh ahi banah, jalhang kimanchah na chu hou vin apui hoi jing ngaiyah ahi.Hiche dinga K.W.S tia imin vo min uva pathen ni seh'a houkhom ibol theiyu hin jalhang kimanchah na din phat chom na lentah aum'n ahi. Ajeh chu hapta seh'a kikhop khom aum teng hapta seh'a jalhang kimanchah na'a het ding, sei ding chuleh bol dinga ngai khoh atamjo suh lel le

tohdoh theiyin aum jin ahi. Vetsahna seidin  
2009 Chavang Kut K.W.S. houin mun'a aki  
man chu ahi

**Pumkhat hina'a phachom:**

Thil tampi kisei jong leh kws machalna hi  
kilung khat le pumkhat hina akon hidin  
tahsan aum'e. ajeh chu christain chate jouse  
chun eikou pao khat ahi banga eiho jong  
khat ihi diu chu sei lou het ahi. Ahin, vang set  
umtah chu inam sungu leh igam sungu va  
kipana thupha kisan na'a dei um lou pen ki  
khentel na le kibungkhen na ina kisan tha  
uhi ahi. Hiche kikhen na ho jeh'a hi gam le  
nam jong khantou machal lhasam chom  
hidin jong tahsan aume. Hitobang dinmun,  
inmun le tolsunga umjong leh K.W.S. beh'a  
kilung khat le pumkhat'a i um theiyu hi  
ihamphat noa khat ahi . Hiche hin nikhat  
gam le nam sunga houbung kikhen adih  
loudan leh kilungkhat(pumkhat) hilou  
angai khoh dan ahin suhlang ding hi

houbung mite kinepna hidin tahsan ahi.

**Pakai thupeh tohdoh na'a phachom:**

Christain te hoilaiyin um jong leuhen itoh  
diu kin kohpen le lenpen chu kipana  
thupha seiphong ding, atahsan lou ho jesu  
tahsan sah ding hi ahi (Matthew 28:19-20).  
Khopi'a um chun hiche kin bol na ding hin  
hahsah na lentah aume, ajeh chu aum sun  
toh le tham nei ding sa'a umcheh ihiove.  
Tahsa tah'n chethei hih jongleu hen, toh thei  
na lampi chu inei tao vin ahi. K.W.S'a kikhop  
khom ibol uva eiho tahsa le lhagao va iki til  
khou naban uvah, nei le nga itoh khom uva,  
hiche ito khom naho va kon'a pathen thusei  
ding missionary isol doh theiyu hi pathen  
thupeh khohtah kin chu chamkim hih jong  
leh tongdoh thei dinmun'n ium theiyun ahi.

Pathenin nin K.W.S. khantou, machal chuleh  
kilungkhat nan ma puijing taken.



# Pathen Dinga Thil Himo Aum Poi

- **Khupmang Doungel** -  
Secretary Missionary Board, KWS (G)



**G**uwahati khopi sunga eimi hon lhom cha khat ki hi jeng jong leh kitoh tah le tomngaina neitah in pan lakhoma Hou-in sah ding tia ina gellu chu tu hin Hou-in lut thei dingin ium taovin ahi. Thil jouse hi igaito a igel leh eiho hatna, chih na leh thepna vanga Hou-in kisa doh ahi pon Pathen panpi najala sadoh ihi jeh uvin PATHEN min thangvah in umhen lang. Abana tuni channa lhasam lou hella bulhingsetna eihin lamkai jing hou chuleh adeh a Church Building Construction ho chule sah le lhang a mimal'a pan hinla ho jouse chung a kakipapina sei joulou kahin phongin ahi.

17th November, 1997 ni hin KSO te makaina noi ja Kuki Worship Service (Guwahati) ana kiphut doh in, hinla aki phudoh jeng vangin dipdap min phat aki mang jing jengin ahi, ajeh chu ajo leh KWS hi chie jompi jou louvin jum le ja thoh in hinkho aki mang jeng dem ti-in lung opkaijin aki um jingin, ahi jengvangin Pathen in eiumpio vin tuhin KWS (G) jong ichie jom pi jingun chuti louvin a HOU-IN LOUPITAH JONG LUTTHEI DINGIN I UM TAO VIN AHI. Lhom cha khat hijong leuhen Hou-in thupi tah isahdoh thei juhi igelleh MIHEM dinga hithei lou chu PATHEN DINGA HIMO AUM POI TIHI IMUDOH THEIJUN AHI.

Chuleh KWS (G) Hou-in inei jeh uva eimiten iphat chompi danu themcha khat sei khomu hite:-

- Guwahati khopi sunga eimiten lung mong leh lhamongin Pathen ivahchoi thei taovin ahi.
- Nunao chapang hon eipaova Pathen thu kisei lungna chimin ingai lha thei taovin ahi.
- Tahsa le lhagaova kitil khou naleh kipui hoina aum thei jingin ahi.
- Sah le lhang a vah le ho jousen jong ahin monpio vin ahi.
- Guwahati hung pha joulou ho jengin jong ahin kithang at piovin ahi.
- Eimite kilungtoh tah in, long dellin ileng khom thei taovin ahi.

Hijeh chun hichana pan ina lah khom nachunguva abana na jong pan lakhom jing dingin ibonchaova tiem leh ngeh ihiove.





# Departmental Reports

## BUILDING COMMITTEE

**D**avid in Pakai Pathen mintheng jabolna ding in Hou-In khat tundoh ding analungtup in hitin aseije; "Pakai ka Pathen'u, keihon **nangma mintheng jabolna'a** man ding hiche **Hou'in** khat sahdohna ding a thil hijat **nengjeng junga kahinto khomsoh keiyu jonghi nangma khut'a hungkon jeng ahin, aboncha hi nang a ma ma ahi**" (1Ch 29:16). Hiche bible chang a kon'a imu bang un, tunin Guwahati khopi sunga cheng kukichaten kumsom tabang inaboipiu, kacholtai tilouva tomngai tah ipankhom nahou aga kipaumtah mutheija tuni **3rd October 2010** nikho a **KWS (G) Church** thenso thei dinga aumtah jeh in Pakai Pathen minloupi thangvah'in um taken! Hiche lolhinna dia thaleh jung, sum le pai hintohdoh mun chom chom'a houbungho leh mimal a hin kithopi ho jouse, chuleh Guwahati khopia anacheng masa ho (Founding member), officer ho, solkal natongho, hou natongho chule simlaiho chungu kipana seijoulou kahin phonge.

Chuleh Kum 1998 apata Pakai in akelngoite ching ding a angense, KWS(G) Houbung lamkai ho jouse, abahkai ho i.e. Building Committee, Missionary Board, Women Society leh Khanglaite lamkaiho jouse chungu jong kipa thu kahin phonge. Guwahati khopi hi, sah solam gamkai (North Eastern States) a cheng ho dia peldoh theilou khopi poimo tah khat ahi tohlhona Kuki chaten jong Pakai mina ikiloikhom nadiu KWS (G) Church ineitheh tahjeh un eilolhin sah u Pakai pathen hatchungnung thangvah in um hen.

KWS (G) Hou-In sahna dinga Date 5/4/2000 to Date 25/9/2010 sunga sumlepai kimujat leh akisumangjat, anoiija banghin kahin tahlang in ahi:

Akimujat (Income): **Rs 77,75,612.75**

Akisumangjat (Expense): **Rs 77,59,903.25**

Khut'a sum umjat (Balance): **Rs 15,709.50**

(Rupees Fifteen thousand seven hundred nine and Fifty paise) only.

Hiche achungu kitahlang Income and expenditure statement hi, building project kipat akon'a achaichan final Audit report dungjuija hung kipe ahi. Hiche Audit bolna a eikithopiu Auditorho chuleh adehset a tu tua KWS(G) Auditors Pu Manglet Haokip leh Gl. Haopu Khongsai chungu jong kipathu akiphong in ahi.

Pathen in muntin'a um Kuki chate jouse avangboh na eipeh cheh uhen lang KWS (G) vangboh jom jing taken, Amen.

Pakaija na lhachao,

MR THONGKHOLET MATE

ecrtetary,

Building Committee, KWS (G)



**FINAL AUDIT REPORT  
K W S - GUWAHATI BUILDING PROJECT**

		DEPOSIT	WITHDRAWAL
<b>INCOME</b>	TITHES	46,47,346.00	
	OFFERINGS	49,646.90	
	FAITH PROMISES	6,88,926.90	
	BUILDING BOX	3,30,171.95	
	BUILDING FUND	8,75,709.00	
	DONATIONS/GIFTS	5,03,812.00	
	LOANS AND ADVANCES	6,80,000.00	
	<b>SUB-TOTAL</b>	<b>77,75,612.75</b>	
<b>EXPENSES</b>	HOU-IN MUN CHOHN A LE REGISTRATION		6,70,500.00
	BUILDING SAHNA		47,02,188.00
	LATRINE/BATHROOM		5,02,800.00
	QUARTER/STORE-ROOM		90,420.00
	WATER PROJECT		2,90,100.00
	BAPTISMAL POOL		15,400.00
	EARTH FILLINGS		2,75,000.00
	BOUNDARY WALLS		2,14,500.00
	BOULDERS		85,000.00
	DRAINAGES		75,000.00
	CONTINGENT EXPENSES		1,58,995.25
	LOANS AND ADVANCES		6,80,000.00
	<b>SUB-TOTAL</b>		<b>77,59,903.25</b>
	CASH IN HAND AS ON DATE		15,709.50
	<b>SUB-TOTAL</b>		<b>15,709.50</b>
	<b>CHECK TOTAL</b>	<b>77,75,612.75</b>	<b>77,75,612.75</b>
Rupees Eighty nine thousands seven hundred eighty two paises fifty only.			
Sd/- MANGKHOLET AUDITOR		Sd/- HAOPU KHONGSAI AUDITOR	



## Detail Expenses on Head-wise KWS Building Project

Hou-in Building		Latrine		Quarters/Store-Room		Water Project		Misc	
Irons/Sands/Cem ents/Brick/Chips etc	17,85,000.00	Sands/Cements/ Brick/Chips etc	3,75,000.00	IronsSands/Cem ents/Brick/Chips etc	45,000.00	Irons/Sands/Cem ents/Brick/Chips etc		Plot chohna le Registration	6,70,500.00
Marble/Tiles	5,10,000.00	Electricals	5,500.00	Ceiling Fans	1,500.00	Ringwell	1,07,000.00	Baptismal Pool	15,400.00
Ceiling	2,58,000.00	Pipes	9,000.00	Electricals	2,500.00	Aqua Guard	8,000.00	Earth fillings	2,75,000.00
Bench	85,000.00	Doors/Windows	22,000.00	GCI Sheet	15,100.00	Sintex	8,750.00	B/Walls	2,14,500.00
Sounds	1,25,000.00	Railing	0.00	Doors/Windows	8,500.00	Tube-Well	1,03,000.00	Boulders	85,000.00
Electricals	3,85,750.00	Painting	7,500.00	Painting	2,000.00	Pipes	12,500.00	Drainage	75,000.00
Fans	40,800.00	Transportation	20,950.00	Misc	750.00	Misc	2,500.00	Contingent Expenses	1,58,995.25
T/Cross	3,940.00	Masonry/Labour	62,850.00	Transportation	3,767.50	Transportation	12,087.50	Loans/Advances	6,80,000.00
Doors/Windows	1,75,000.00			Masonry/Labour	11,302.50	Masonry/Labour	36,262.50		
Railing Rods	65,000.00								
Painting	2,75,000.00								
Glasses etc	75,000.00								
Misc	1,35,000.00								
Transportation	1,95,924.50								
Masonry/Labour	5,87,773.50								
	47,02,188.00		5,02,800.00		90,420.00		2,90,100.00		21,74,395.25

# Departmental Reports

## KHANGLAITE

### **KWS (G) Khanglai kiphudoh leh kivaipoh na lhangpi:**

Pakai kum 2006 in Khangthah lunggel thei mi phabep in lunggel seikhom na anei un ahi. Hichea ana seikhom lolhing tah, tuchan a kichepi jing khat chu houbung khantouna ding hi khangthahte chung a akingap dan aseikhom un ahi. Hiche toh lhon chun atumbek a khangthah te kiloikhom na anasem doh un Dt.12 March 2006 in KWS(G) khanglai phudoh ana hitai. Thupi chepi ding a anakideilhen "Let your Light so shine..." Matt. 5:16 hi tuchan a chepi ahijing e.

Hiche kum a pat chun khanglai ten kumseh leh lamkai thah lhen na ana kinei jin ahi. Lamkai thah kilhen na banah hiche kum a chepi ding tohgon sem na jong akinei jin ahi. Lamkaiho bou ngense lou in lunggel laikhom thei na dingin General Body Meeting ana kikou jin kumlhung a kimanchah nading tohgonho sei khom na le thulhuh na akineijin ahi.

Khanglai tia ahung kiva hom apat in houbung lang amachal jengseh hilou in chapang Sunday school jong Khanglaiten mopoh na anakila in phatechan tu chan in che pi ahijinge. Sunday School a kai ding in kum 15 a pat nuilam se kaicheh din phatsah anahi e. Music project jong ana kinei jing in hiche toh lhon chun Keyboard jong lamdoh in ana um in ahi. Chuleh music training (solfa) jong ana kinei in mitamtah in aphatchom pi lhen in ahi.

Pakai kum 2007 a thulhuh na anakinei bang in Chate nikho manpat anahi in tuchan in chepi jing ahitai. Bible quiz jong akum akum a kiphatsah dung jui in anakinei ji in ahi. Gl. Paocha Chongloi Pathen lenggam natong

dinga ana kipeh doh toh lhon in Khanglai Chairman hina jong anala in Careforce a dia apot August 2009 chan in Khanglai Chairman in anapang jing in ahi.

Khanglai kikhop atumbek a um ding deisah ahitoh lhon in Saturday seh in kikhopna ana kibal in hinla hahsat na aum jeh in hiche kikhop na hi suh jom anahijou tapon ahi. Pakai kum 2008 hi KWS(G) kum 10 lhinna ahitoh lhon in KWS(G) Choir jong semdoh anahi in ahi. Kum 10 lhinna Pathen phatthei boh na ho phondoh toh kop in thupi tah in anakimang in khanglai ten jong nasatah in pan anakilan ahi.

Khanglai nikho hi man jing ding in phatsah na anakinei in hichetoh lhon chun 2nd Saturday of September deilhen anahi e. Pakai kum 2009 chun Music fest neiding phatsah na anakinei in, ahin nikho chom a mang chom lou in Music fest le Khanglai nikho thupi tah in anakimang khom in ahi.

### **Pakai kum 2010 sung a kiman chah na lhangpi**

Pakai kum 2010 in jong Pathen lungset jalin tohgon kumbul a kigong ho bang in atamjo

chai ahitai. Anoi a ho hi tukum a tohgon dia kigong ho ahi:

- 1) **Seminar on Motivation & Discipleship:** Pathen lungset jalin tohgon masapen chu April 15, 2010 nin thupitah in manchai anahitai. Hichenia Resource person a eipan peh u Pastor Gibson Marak le aloihon Pathenthu le tahsa lam a kikhokhah ding dan eihil un ahi. Session ni in akihom khen in hiche nia kikhom chu member 45 vel ahi.
- 2) **Dantheng a kichengho thilpe:** Kumbul kilol na dung jui in danthenga kichen na ananei Hatnu Khongsai leh David Lhungdim chu Bible ana kipen ahi.
- 3) **Shillong Visit:** Khanglai ten kumbul kilol na a anakisei khom in Shillong visit dingin pha anakisan ahi. Tohgon len ahijeh in Houbung a pohlut ahi in houbung in phatsah na aneitoh lhon in houbung tohgon joh a lahlut ahitai. September 5, 2010 ni jingkah matah in KWS(Shillong) leh KWS(Happy valley) group ni in akihom khen in vilna agakinei in ahi.
- 4) **Album Project:** Houbung in khanglai te kilol na anapom peh dung jui in Gospel Album project chu chepi ahijing in ahi. Hiche project amachal thei na ding le kitup tah a kipui hoi thei nadin Committee ana kistem in ahi. 1. Ml. Gary N. Munluo, 2. Gl. Satminthang Khongsai, 3. Ng. Chinneineng Haokip amaho chenghin hiche album project chung a eihin mopoh peh diuva anakilhengdoh ahi. Fund alhahsam

ding jeh in fund drive na ding in An Evening with KWS(G) Choir tin nisim September 19, 2010 ana kigong in lolhing tah in chai ana hitai. Hiche ni chu fund drive na keoseh hilou in kum dang a Khanglai Nikho tia September 2nd Saturday anakimang chu achom a mang talou in hiche nikho chun ana kinit thaitai.

Tukum Pathen lungset na ichan jalun Gl. Martin Zairem Hengna, Khanglai Secretary a eipan peh sung un Pakai lenggam a natos nomna lunggut anei jeh in ana kalsong tan ama khel ding in houbung mipi leh Pathen deisah in Gl. Lalboi Mate ana kilheng doh in ahi. Pastor Rev. M. Haokhothong in Pathen henga taopeh na leh lhandoh na ana nei in ahi. Gl. Martin Zairem Hengna kalson na chungah khanglaiten kipapi na in Rs.500/- in ana kipanpi in ahi.

Khanglai ahung kiphudoh a pat a lamkai a eina panpeh hou anoi a bang hi ahi:

#### 2006:

Chairman	: Evan Thanglal Haokip
Secretary	: Gl. Hemkholen Haokip
Fin. cum Treasurer	: Ng. Rebecca Changsan
Music Secretary	: Gl. Thangminlen Munluo
Sunday School Supdt.	: Gl. Zamminthang Baite
Member	: 1) Ng. Dr. Nenem Lhangum : 2) Ng. Zampui : 3) Ng. Lhingneikim

#### 2007:

Chairman	: Evan. Thanglal Haokip
Secretary	: Gl. Thangminlen munluo
Fin cum Treasurer	: Ng. Kimchin Lhangum
Sundayschool. Supdt.	: Gl. Paocha Chongloi
Member	: 1) Ng. Rebecca Changsan : 2) Ng. Lhingboisingson, : 3) Gl. Hengoumang Lhoujiem

**2008:**

Chairman : Gl. Paocha Chongloi  
 Secretary : Gl. Hemminlun Haokip  
 Treasurer : Ng. Kimchin Lhangum  
 Member : 1) Ng. Kimboi Haokip  
 : 2) Ng. Kimneilam Changsan  
 : 3) Ng. Lalam Thangeo  
 : 4) Gl. Thomas Haokip  
 : 5) Gl. Seiminlal Changsan

**2009:**

\*Chairman : Gl. Paocha Chongloi  
 : Gl. Manga Haokip (from August)  
 Secretary : Gl. Martin zairem Hengna  
 Finance Secretary : Ng. Kimchin Lhangum  
 Active Members : 1) Gl. Manga Haokip  
 : 2) Gl. Kakai Haokip  
 : 3) Gl. Thomas Haokip  
 : 4) Ng. Chiching Guite  
 : 5) Ng. Kimneilam Changsan  
 : 6) Ng. Kimboi Haokip

*\*Gl. Paocha Chongloi Careforce a dia UK a avaikon doh jeh a Gl.  
 Manga Haokip ama khel dia ana kilheng doh ahi.*

**2010:**

Chairman : Gl. Khailenlal Benjamin Lhungdim  
 \*\*Secretary : Gl. Martin Zairem Hengna  
 : Gl. Lalboi Mate (from August)  
 Treasurer : Ng. Rebecca Changsan  
 Sunday School Supdt. : Pu Gary N. Munluo  
 Sunday School jilkungho : 1) Gl. Lalboi Mate  
 : 2) Gl. Kakai Gamlhou  
 : 3) Ng. Chongte Singson  
 : 4) Ng. Piengmawi Changsan

*\*\* Gl. Martin Zairem Hengna Bible sim ding a anakal sondoh  
 tahjeh in ama khel ding in Gl. Lalboi Mate lhendoh ahitai.*

Pathen in asim jouse phatthei boh cheh  
 taken.

Sd/-

Gl. KHAILENLAL BENJAMIN LHUNGDIM  
 (CHAIRMAN)

Sd/-

Gl. LALBOI MATE  
 (SECRETARY)

Sd/-

Ng. REBECCA CHANGSAN  
 (TREASURER)

Dated: Guwahati | September 22, 2010



# Departmental Reports

## NUPITE



Tuni Oct.3, 2010 niso melhoi tah, KWS(G) te dinga aith a suhmil louding nikho, eimu sah uvah Chung Pathen thangvah in umhen!

Jan. 4,1998 a KWS(G) ihung kiphu doh uva pat in nupiten kabolthei pen'u chule apoimo pen tia gellin "TAONA" in pan ana kila pan'e. Lhaseh a second Saturday hi nupite taokhomna ni in ana kineijin, tuchan in hiche hi kichepi jing'e. KWS(G) Houbung in 2000 kum a pat, Hou-in mun choh ding ana gellun, taonan nupiten akipan hu jingin ahi. Taona lolhinsah, Pathenin, amun eihin choh doh sah un, chu in 2004 in Hou-in sah ihung kipan taove. Mipate se se Hou-in sa a akisah lel uva, pan analah jing laijun, nupite se sen insung vettup toh taona in mipa te ana kitosot jing in ahi.

Hou-in sah doh dinghi minuten akikhoh sah a akipoh nat lhev jeng vangin bolthei akineilou jeh in lung sung ah anakivop jingin ahi. Kum som tobang pona tah a taona toh thoa kahin vop uchu, tunin melhoi sellin, mutheijin ahung soh doh tan, kakipah beh seh jengun ahi. Thilpha seijou lou eibolpeh Pathen thangvah na kapeuve. Ahou-intheng tungdoh dinga hatloutah le lhasam tah KWS(G) Houbung mite Pathenin eiman chah uhin, AMA loupina akiphonge.

KWS(G) Nupi taokhom hon Hou-in sah na dinga thei kham kham'a Pathen songa pan ana kilah naho them khat kahin tah lang nom'e:-

Dec.12,2004	> Rs.30,000.00
Oct.9,2005	> Rs.10,000.00
Aug.6,2006	> Rs.10,120.00
Nov.19,2006	> Rs.11,080.00
Mar.5,2006	> Rs.19,556.00
Oct.19,2008	> Rs.13,800.00 (Pulpit)
Total	> Rs.94,556.00

Pulpit sem ding hi 2002 a kilolna ana kineisa ahin, 2008 a ahin kimolso thei jeh un Pathen kathangvah uve. Chule Pulpit hi Pi Nenghoi Manchong in ama tah in supervise abol'a, asemho chu adinpi, atoupi jeh a hung kibol doh ahijeh in Pi Nenghoi Manchong chung ah kipa thu akiphonge.

July 2007 a pat December 2009 sung hin Project chom khat ana kichepi jeh in deibangin contribution ana kibol theipoi. Project chu ahile, ihoubung mi ngaitah u, Pi Neichong le Pu Paolet Lhouvum in, vangset umtah a hinkho lemjuh a, ana dalhah hon, achateu Mangboi te ucha hi lhaseh in Rs.1000/- in kithopina ana kipeu ahi. Chu in amaho ucha hi Pathen lungset vangin natosh ahin kimu lhon in chule aneopen Lamsi'n jong Matric ahin chaitai. Amaho ahung kipoh thei dom phat un kithopina ana kipe chu December 2009 in ana kingan, ahinlah akhoh khoh naova vetji dingin phatsah na ana kineije. 2010 a pat, Nute Project a ding in Evan.Moneswar Guala hi Missionary support akibol in, lhaseh a tohman ding in



Rs.2000/- hi March 2010 a pat kum khat sung ding'in gonpeh ana hitai.

2010 kumbul nupite kilolna dung jui in, tukum a Hou-in lutna inei tah ding jeh un, hiche kin'a ngai cha ding le man chah dinga kigel ijatponu saipikhup hi, nupiten kipa nale kipeh na a, atoh thei chanin to ding in phatsah ana hi. Hiche toh kilhon chun 26.09.2010 ni hin pon 20 hi Houbung ho khut ah ana kipe lut tai. Pathen thangvah na peu hite, "Ijeh inem itile alung nachim ding

deichat nale, tohnom na dinga nasung uva natong chu Pathen mama ahi bouve" (Phil.2:13).

Achung a hung kitah lang hou jouse hi ivet leh Pathenin hatmo le lhasam nupite jong eimang cha nomun, chule Pakai dinga itoh ule, ithilpeh houhi moh ahipoi ti akiphonge. Loupina le thilbol theina Pakai a jeng ahi. KWS(G) le nupi kiloikhom ho Pathen in vang boh jing henlang, AMA hungkit kah sen che jom jing taken!

### Nupite Lamkai Masaho –le- Tua Lamkaiho

Kum	Chairperson	Secretary	Treasurer
1999-2000	: Pi Nenghoi Manchong	-	-
2001	: Pi Ngailhing Haokip	Pi Avei Touthang	Pi Khuolneihmoy Khongsai
2002	: Pi Ngailhing Haokip	Pi Lhingnei Thangeo	Pi Khuolneihmoy Khongsai
2003	: Pi Ngailhing Haokip	Pi Lamnu Doungei	Pi Lhingnei Thangeo
2004	: Pi Ngailhing Haokip	Pi Lamnu Doungei	Pi Lhingnei Thangeo
2005	: Pi Ngailhing Haokip	Pi Lhingnei Thangeo	Pi Ngaijahat
2006	: Pi Ngailhing Haokip	Pi Hevei Haokip	Pi Lhingneihat Singson
2007	: Pi Ngaijahat Kuki	Pi Lhingboi Haokip	Pi Lhingneihat Singson
2008	: Pi Ngaijahat Kuki	Pi Lhingboi Haokip	Pi Lhingneihat Singson
2009	: Pi Nengjahat Haokip	Pi Lhingboi Haokip	Pi Lalkim Hangshing
2010	: Pi Nengjahat Haokip	Pi Lhingboi Mate	Pi Khuolneihmoy Khongsai

Sd/-  
(Pi Nengjahat Haokip)  
Chairperson

Sd/-  
(Pi Lhingboi Mate)  
Secretary

Sd/-  
Pi Khuolneihmoy Khongsai  
Treasurer



# Departmental Reports

## MISSIONARY PROJECT

KWS (G) a hung kiphudoh a konin Missionary Project jong ana kichiepi jingin, ama vang atumin mopohna koima anakikoi chom pon ahi. Houbung lamkai Chairman, Secretary leh Treasurer hon ana pohtha jengu ahi. Ahin 2007 a konin Chairman, Secretary leh Treasurer ahin kinei pantan ahi.

### 2007 kuma Missionary Board na lamkai

ho:-

1. Chairman Pu. D.P. Haokip
2. Secretary Pu. Seikhohao Sitlhou
3. Treasurer Pu. Helhun Kipgen

### 2008 kuma Missionary Board na lamkai

ho:-

1. Chairman Pu. Seikhohao Sitlhou
2. Secretary Pu. Khupmang Doungel
3. Treasurer Pu. Helhun Kipen

### 2009 kuma Missionary Board na lamkai

ho:-

1. Chairman Pu. Sothang Haokip
2. Secretary Pu. Khupmang Doungel
3. Treasurer Pu. Helhun Kipen

2010 kuma Missionary Board na lamkai ho:-

1. Chairman Pu. D.P. Haokip
2. Secretary Pu. Khupmang Doungel
3. Treasurer Pu. Helhun Kipen

Chuleh FMPB hotoh kigom khommin Pu. N.T. Jeme leh a insung mite hi Jharkhand na dingin support aki bollin, Mrs. Kim Singsit hi Shillong, Meghalaya a dingin support aki bolin, Guwahati khopi sunga dingin Pu. Warren Momin aki pansah in ahi chuleh Pu. Maneshwar Guara hi nuten support abolluvin ahi. Chule Missionary Board hon Box jong akihomin tuchana hin Box somgup val akihom doh tan ahi. Missionary Box hi lhase leh 1st Sunday teng Hou-in kai khom na a choikhom ahiji in ahi.

Missionary Project dinga sum le pai tha le jung hin podoh ho jouse chung a kipana kahin phonge.

Keima natoh khompio

Khupmang Doungel  
Secretary  
Missionary Board KWS (Guwahati)  
Date: 29/09/2010





# Departmental Reports

## KUKI WELFARE ASSOCIATION, GUWAHATI

Kuki Welfare Association (Guwahati) constituted on 6th December 1998 has the mandate for socio-economic, cultural and humanitarian welfare of the Kukis in Guwahati.

"TOMNGAINA" (the distinctive socio-cultural feature of the Kuki-Chin-Mizo community from generation to generation) guided the constitution of the Kuki Welfare Association (KWA) Guwahati with the motto:- "REJOICE WITH THEM THAT DO REJOICE, AND WEEP WITH THEM THAT WEEP"

### PURPOSES AND OBJECTS:

- i) To take active interest and attend to civic, cultural, SOCIAL AND MORAL welfare needs of the community
- ii) To unite the members in the bonds of friendship, good fellowship, mutual understanding and respect and to respond to the genuine needs of the community
- iii) To encourage service minded people to serve their community and others without personal financial reward
- iv) To assist the needy ESPECIALLY IN CASE OF DEATH
- v) To build up and not destroy
- vi) To ensure, set and maintain a high MORAL standard of the Community

### The Kukis in Guwahati:

The vibrant Kuki society in Guwahati is constituted by an ever increasing population of over 500 members with varied occupational profile-students, services, ex-servicemen, professionals and business etc. Kukis in Guwahati are self-organised under three mutually linked organs viz; Kuki Students' Organisation, Kuki Worship Service and last but not the least Kuki Welfare Association.

There is freshness and a very unique sense of community ownership among the Kukis that

binds this very hardworking, honest and cultural Kuki community in Guwahati. We in Guwahati love to call this "the Guwahati Spirit".

For the general Kuki society today, Guwahati comes a natural second best option for posting, education, business or even for homemaking owing to the faster infrastructural development, relative sense of peace and investment opportunity.

The Kukis in Guwahati (KWA, KSO and KWS) by virtue of locational advantage has time and again extended yeomans' humanitarian services to Kukis in their times of need especially those who come for treatment, transit and for other purposes. Kukis in Guwahati connects all of us from Assam, Nagaland, Manipur, Meghalaya, Tripura, and those in Delhi, Bangalore, Kolkata, Hyderabad, etc..

We are but one in HIM!

Chibai!

KWA Guwahati (kwaguwahati@gmail.com)

Committees of KWA-Guwahati  
Executive Committee (2010)  
Pu T. Hangshing (President)  
Pu Zamlet Haokip (Secretary)  
Pu Mangneo Lhungdim (Treasurer)

Special Invitees:  
Pu Khupmang Doungel (Audit)  
Pu Hans Thangboi  
Pu Manglet Haokip

## Comments from Church members & well wishers'...

Guwahati a thinglhang mi lah a denomination beija hou-in tungdoh masa pen ehui hi pathen in phat thei eiboh u aki dang'e.  
- *Gl. Khupsat Haulai*

Kakipana lenpen chu seisen lou hahsat na ijat umjong le tahsa le lhagao va kilung toh tah a KWS hin phut doh ho nung ijiu uva Pathen kom'a lhandoh na le lopna mang thei ding'a a um hi loupi kasa in houbung mite jouse chung'a kipana hihen lang loupi na Pathen chang ta hen!  
- *Pu Thangneo Haokip*

Kinepna hing jing nei nam mite, eki nep nao pa Pathen in ama, lungnachim a hou thei na, inn ei tungdoh peh u hi, thangvah dia lom, vahchoi dia lom Pathen ahina atah lang in, kum khon amin theng loupi jeng ta hen, Amen. Pu. Gary Munlo  
Pakai neipui dan u kangai to le mihem lung'a gel din agil ta loui. Pi le Pu sat lou na gam ma kalen nao va nakhut hat in nei pui jun, nei ching jing un.  
- *Nu. Pui Munlo*

Houbung mipi kilung toh tah a na hung kitong khom ma minu mipa te chule nungah gollhang ami takip tompan na jal'a adeh set in building committee te aki pat na pat a achai na chan na pang ho chung'a kakipah in chuteng le hou in ki thengso ni gei ja kei le kainsung mite jong houbung mipi telah a kahung lhat thei jal'in Pathen chu kathang vah in ahi. Kaki pah e.  
- *Nu Chongboi Singait.*

Katoh lou malsom na, kathum na sang'a sang jo pathen thil tho pieh houbung mipi, minu mipate jouse leh khanglai te KSO te hapan najal leh Pathen phat thei boh chang'a tuni chan gei ja hou-in kisachai muthei ding le hou-in kithen so na a kei le kain sung mite jong kajao phah jal'un Hallelujah tin Pathen kathangvah e. Hou in sahna ding'a athale jung, a sum le pai it lou va ana pang ho KWS(G) houbung members, ana mol lem tasa ho jong kagel doh in, amaho toh sa, aga louva Pathen in eipan sah hi kidang kasan Pathen chu loupi pen hen lang choi at na chang jing hen. Hiche hou-in hi Pathen loupi na hi jing ta hen!  
- *Pi K.T Aneng Singson*

David in pakai hou-in kalha ngai je atibang'a guwahati 2004 a kahung chun, hou-in kalha ngai in kum khat jen hou in kai nading he lou vin kana um me. Tua hitabang hou-in nahin tun doh uhi ana gongdoh hole tha le jung ana seng ho chung'a kaki pana kahin phong'e. Nampi jouse a ding in khan tou na le pakai ja lung ngap na mun tu le atonsot a din hi jing taken!  
- *Pi. Kimneichong Munlo*

Guwahati kahung chun hou-in kai na ding kana hol mon ahi. Hou-in sah akipat til lai in hitabang'a kisah doh ding kana ging chapon ajeh chu amun hi paat lah anahin hitabang'a ahung kisah ding akisei til lai jin katha anom lneh e. Hitabang'a ahung kisah doh hi kakipah lneh e. Chule chate ho jong hitabang'a church choir a ahung pan thei hi kaki pah ma2 e. - *Pu Haokholun Haokip.*

Hou-in hi anal lha jeng'e.  
- *Nu Mary Kipgen*

Tuni chan na eihin pui u Pa-Pathen in aban akhang2 in KWS(G) ma hin pui jing ta hen!  
- *Nu Lhingnu Haokip*

Ihou-in u ahoi totoh a hi, lhagao va jong i al-u ngai jin te!  
- *Nu Moi Khongsai*

Pathen in ei malsom nao lah a asang pen, guwahati khopi a ama kihou nading Hou-in eipe taove. Hijeh chun khaije, kipah thanom'in ama kin na ding'in kimang tao te.  
- *Nu Lamnu Doungel*

Mithil chungah lungmon na aumpoi. Eija kiti hou-in vai lah a kinei hi, chung'a kon thilpeh mong2 ahi.  
- *Pu Jamkholal Haokip*

Keivang kakipah behseh in hoija kapat a hoija kachai di hi tam? A mun ding kichoh til lai kagel doh le eina mollem sen hou kagel doh jin kanuh abing den ji te.... Genthei tah a hitabang'a Pathen Hou-in hoitah ehin tungdoh uhi Pathen jal bou ahin Ama kathang vah mong2 e.  
- *Nu Hatpha Haokip*

Hichan geija eipui hoi u Pathen loupe na chang ta hen chule houbung nule pate jong Pathen in phat thei boh ta hen!  
- *Ng. Lhingboi Singson*

Pathen phat thei boh na chang KWS (G) tonsot in muol la thaomei vah bang jing hen!  
- *Gl. Thangboi Touthang*

Hou-in sah ichai chai uleh project dang khat ibol gang chal lou uleh ima thah den diu ahi.  
- *Pu Manglet Haokip*

One Historic moment for His Glory, dedicated rightly to Him, confident we will remain grounded to Christ.  
- *Pu Mangneo Lhungdim*

Pathen Houin theng tundoh hin Pathen in eium piuve ti photchen na ahi. Pathen in hiche tundoh na ding a thale jung hin sep khom jouse ajatjan phatthei boh taken.  
- *Gl. Benjamin Lhungdim*

Pathen phat na jal'a hichan ehin phah u ahin, hijeh chun thil le lo vesui ding hon jong Pathen ngailu pum ma thil le lo ho jong ngailu tah a esasa diu hi katem nau le kakinep na ahi.  
- *Pu Hemang Dimngel*

Pathen phat thei boh ichan jal'un Hou-in thupi tah in esa chao tao vin, tua bang'a alen aneo aboncha, ei puikhom thei, pate inei bang'un, hiche Pathen Hou-in ve tup dingle khonung geija Pathen dei le Ama hou te lungkhat'a hin huoikhom thei, khandong lamkai thei; lungpi keng Pathen in eihin pe tao hen!  
- *Gl. Haapu Khongsai*

The successful completion of church building: Through the collective effort of the KWS(G) members , others and most importantly by God's faithfulness to His people.  
- *Gl. Thomas Haokip*

I do appreciate all your efforts and achievements for the Lord. "My dear Christian friends, companions in following this call to the heights, take a good hard look at Jesus. He's the centerpiece of everything we believe, faithful in everything God gave him to do. Moses was also faithful, but Jesus gets far more honor. A builder is more valuable than a building any day. Every house has a builder, but the Builder behind them all is God. Moses did a good job in God's house, but it was all servant work, getting things ready for what was to come. Christ as Son is in charge of the house." (Hebrew 3:4).  
- *Rev. Paokhosei Kipgen, Seoul*

May our good God make the Building to train, edify, send out many Kuki youths all over the World as a lights for His glory.  
- *Pastor Thanglal, Saraighat Community Church*

Tuchung KWS, Guwahati Houin sah doh leh tundoh a um thei jeh in Pathen thang vah in umhen. India Khopi leh mun dang danga Lamkai holeh mipite hon jong Kitho khoma, amun muna Houin khat cheh sah doh na tei dingin pan lacheh ute. Pathen nin Kuki Worship Service phat thei boh taohen. Kakipah e!  
- *In Christ, LunThomas, A'bad*

Kuki te hi Hou-in sah napon tho uvin, akai nom na umji pou ve.  
- *Rev Chungthang Theik*

KWS(G) Church dedication bol theidia hichan lamkai hon na hin tohmolso nao chungha kakipa na ka hin phong nge.  
- *Rev. J. Doungel*

May the KWS (G) continue to be a source of spiritual blessing for the city of Guwahati and Assam. Shalom!  
- *Rev. Dr. J.M Paupu*

KWS(G) hou-in a ding'a ipan bang uhin kipangkhom chehleh kukiland in jong nomtah in kium tan te. Long live KWS(G)!  
- *Ng. Kim Hengna*

"On this glorious auspicious occasion, I'm reminded of God's eternal love, faithfulness and power all these years despite our human failures, wickedness and weaknesses. I'd like to pay tribute to those great men and women of faith who have gone home ahead of us. I believe even they will be rejoicing with us on this day in heaven above... We who are alive today, let us learn to live by faith and when our time on earth is over , may it be said of us too that we were men and women of faith - in a faithful God."  
- *Ng. Chin Haokip*

"Houbung mipi alen aneo leisun social work ana kibol tunia egel leh Pathen phatthei simsenlou echan u akilang e."  
- *Gl. Manga Haokip*

"The Lord has done great things for us and we are filled with Joy." Psalm 126:3". God is faithful! May all glory belong to Him.  
- *Ng. Chochong Haokip*

"KWS(G) houin sahna dia nule pate kiphaltah a apan jeng u hi, hinkho a lesson phatah eihil taove"  
- *Ng. Kim Hengna*

"Houin sahdoh tundoh na dinga ikihabol banguvin, lhagao hinkho dingin jong kiki habol leh khantou machal phattheina jong kidongbe inte."  
- *Gl. Hengoumang Lhoujiem*

“Its indeed amazing and wonderful to experience God’s love and faithfulness. I Could feel the presence of the Holy Spirit in the midst of KWS(G). There is the power of the love of GOD which binded us together. May this church be channel of blessings to others.... GOD BLESS KWS(G)”  
- Ng. Rebecca L. Changsan

“Guwahati City a boina leh hahsatna ijat um jongleh Pathenin aphatseh a eumpi najal in amasan Pathen Kathangvah’e... eiholah a member kimlou hijongleh aphatseh a geldoh nading in kahung tiem e...”  
- Ng. Margerete Haokip

“Jona eipeuva Pathen thangvah in umhen! Alungset longlouvin eumpi jing uve ti imutaove. Hitobang thil Nampi ngailut na jalla Pathen lenggam kehlen nadia ana gongdoh hole panlaho jouse Pathenin simjoulou phatthei boh taohen. Taona toh thoa apan jalule Pathen lungset na jalin HOU INN theng hoitah inei taove vaigama um KUKI chaten. Khaije! Khannou guolte a inn hoi keohi nganse poute. Asunga um’a natong ding eiho ihuive, Phunggol cheng lung toh in chimlouvin ama vahchoi jing ute. Tahsa le lhagaova kitem thah utin, Chonset’a thisa lhagao mangthai ho huhhing na hong’a pulut ute. Nampi semtup nadin KWS(G) khompi dettah in hungpang hen! A lenggam kehlen nadin Pathen’n achate le a inntheng hi lhagao thengin akhang khang in opkhum jing taken!! ‘DAMSOT HEN KWS(G)’.”  
- Gl. Paominlen Changsan

“Pathenin KWS(G) mun a ama houin tundoh musah thei a hinkho damna eipeh jeh in kakipah.”  
- Ng. Babeechan Haokip

“A united church is a strong church. May God bless our congregation that we may always walk together in perfect unity.”  
- Gl. Seikhongam Chongloi

“Guwahati a Hou-in isah doh thei u kipa aum e. God’s home is now with his people. He will live with them, and they will be His own. Yes, God will make His home among His people. Rev. 21:3. Hitobang vision ana nei lamkai masaho jouse chung’a jong kipathu kahin phonge.”  
- Gl. Tongkhomang Haokip, Tinsukia

“Cross thil bol thei na chun KWS(G) hinkho thah eimu sah jeh un chejing ute lunglha louvin.”  
- Gl. Kakai Gamlhou

“1995 kum in Guwahati khopi ahung kilhungin houin kaina ana kilung dong lneh in ahi. Houin kaina ding Zomi Christian Fellowship khat ana um in, lasah thusei hahsatah in mipaovin ana kimangin, tu vangin Pathen lungset jalin eipaovin la akisan thu akiseijin, hitobang mun le phat pha ho akichan thei jeh in Pathen kathang vah e.”  
- Pi Nengjahat Haokip

“Eihon i he thiem thei pouve chung Pathen thilgon hinla tunin imu tauve Pa’n thil eigon peh u.”  
- Ng. Vejjakim Changsan

‘Elijah Maicham Pathenin phatthei aboh bangin, tu leh akhang khangin Pathen loupi kilah na houbuh hi jing taken.’ Pathenin umpi jing taken, KWS(G).”  
- Ng. Lhingcha Gamlhou, NC Hills

“Hiche houin ahung ki jotah ngal phat in Pathen phatna vang kasei chim jou poi. Kakipah e.”  
- Pu Tongpao Haokip, Chairman Building Committee

Ami jalai hibang lah a KWS(G) Pathen in eimasot uhi iti loupi hitam..!  
- Simi Gamlhou

KWS is like a pheonix to me! The rising of the long lost never say die spirit which our forefathers always aspire and live upto! Flying far ahead to the front ,always scanning the distant landscape , this never say die spirit, represent our capacity for vision and adapting to new events unfolding before us in our times so that we can truly be in tune with our God and mankind. KWS with its wonderfull aspirations creates intense excitement and deathless inspiration in all of us for all times.  
- Pu Tonglen Hangsing

Sim lam mal lam ma um kuki chate lungkitoh a pathein ihou khom nau KWS hinsot hen damsot hen.  
- Mrs Lalkim

"God our Ebenezer' thus far has the Lord helped us. From a scratch the Lord has set up a beautiful sanctuary, a dwelling place for His glory in the heart of Guwahati City, to me the KWS Church is a symbol of God's unending, unending love and faithfulness towards us. Ten Years of our walk with the mighty and glorious Lord."  
- Dr. Kim Haokip



# PHOTO GALLERY



**KWS-G member ho (1998)**



**KWS-G Nupi te Upa te lim (1998)**

Stage wise Building photos >



**Completion of Pilings in April, 2004**



**Overseeing of scaffolding works by church members**



**Church members visiting church construction**



**KWS (G) Pastor Rev. M Haokhothong gracing the first slab casting**



**(Lt.) Pu Thangkhoen Thangeo casting the Pillar**



**(Lt.) Pi. Ngailhing Haokip taking part in slab casting**



**KWS Guwahati Church Year 2008**



**KWS Guwahati Year 2010**





**Church elders on the way to Shillong for Church Visit - Year 2002**



**First Christmas (2003) in KWS(G) Church campus with Rev. J.M Paupu**



**KWS(G) Executive committee 2010**

**Sitting Row: (L-R)**

Pu Tongpao Haokip (Chairman Church Building), Rev. M. Haokhothong Manchong (Pastor), Pi Nengjahat Haokip (Chairperson Nute), Pu Sothang Haokip (Chairman), Pu D.P Haokip (Vice-Chairman / Chairman Missionary)

**Standing Row:**

(L-R) Pu Manglun Singsit (Treasurer Church Building), Gl. Benjamin Lungdim (Chairman Khanglai), Pu Lunjalen Khongsai (Secretary), Pu Helhun Kipgen (Treasurer), Pu Thonglet Mate (Secretary Church Building), Pu Khupmang Doungel (Secretary Missionary)



**KWS (G) Missionary Board 2010**

**(L-R):** Pu D.P Haokip (Chairman), Pu Khupmang Doungel (Secretary), Pu Helhun Kipgen (Treasurer)



**Church Building Committee 2010**

**(L-R):** Pu Manglun Singsit (Treasurer), Pu Thonglet Mate (Secretary), Pu Tongpao Haokip (Chairman)



**KWS (G) Nute Committee**

**(L-R):** Pi Nengjahat Haokip(Chairperson),  
Pi Lhingboi Mate(Secretary),  
Pi Khuolneihmoy Khongsai (Treasurer)



**Khanglai Committee 2010**

**(L-R):** Benjamin Lungdim (Chairman),  
Rebecca Changsan (Treasurer),  
Lalboi Mate (Secretary)



**Sunday School Children**



**Souvenir Committee**

**(L-R):** Benjamin Lungdim,  
Neikim Manchong,  
Lunjalen Khongsai,  
Haopu Khongsai



# Church Dedication Program Sheet

KWS(G) CHURCH DEDICATION PROGRAMME	
Theme: GOD our HOPE (Lam.3:21-24)	
Oct.2, 2010	
12:00 - 16:00 Hrs	Registration of outstation Delegates/Guests
16:00 - 17:00 Hrs	Evening meal with KWS(G) & Delegates/Guests
Thanksgiving Prayer (17:30 - 19:30 Hrs)	
Leader	Pu Sothang Haokip, Chairman, KWS(G)
Sharing cares and concerns with Prayer	KWS(G)/All Delegates
Oct.3, 2010	
KWS(G) CHURCH DEDICATION SERVICE (10:00 - 13:00 Hrs)	
Leader	Lunjalen Khongsai, Secy. KWS(G)
Assembly at KWS(G) Church Campus	All Participants
Unveiling of Church Dedication Plaque, Ribbon cutting & Opening of KWS(G) Church	Rev.Dino L Thouthang Chairman, AIKWSSC
Praise and worship	KWS(G) Youths
Welcome address	Rev.M.Haokhothong, Pastor KWS(G)
Song of praise	KWS(G) Youths
God's mighty works in KWS(G) Church Construction	Pu D.P.Haokip, Vice Chairman, KWS(G)
Special Numbers	KWS(S)/KWS(HV)/HCF/ZCF/EBC
Greetings	Various Churches/ Orgs.
Together in praise	KWS(G)
Message: GOD our HOPE (Lam.3:21-24)	Rev.Dino L Thouthang Chairman, AIKWSSC
Closing prayer	Pu Sothang Haokip, Chairman, KWS(G)
All are requested to join the Thanksgiving Feast after Church Dedication Service.	



**KUKI WORSHIP SERVICE**  
**GUWAHATI**  
**CHURCH DEDICATION**

<Date>  
October 3, 2010

<Venue>  
KWS(G) Church Complex, Chachal, VIP Road, 6<sup>th</sup> Mile, Guwahati.

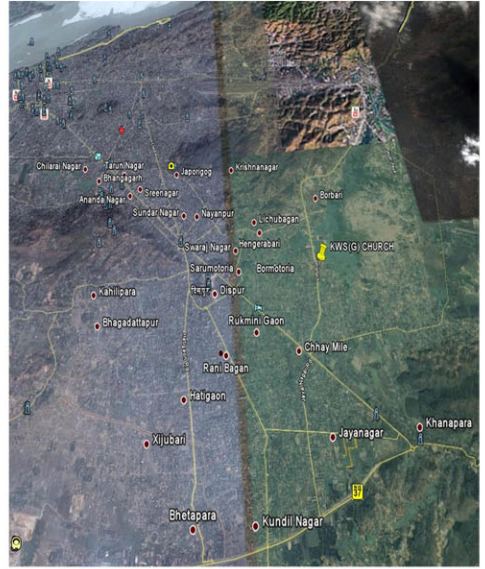
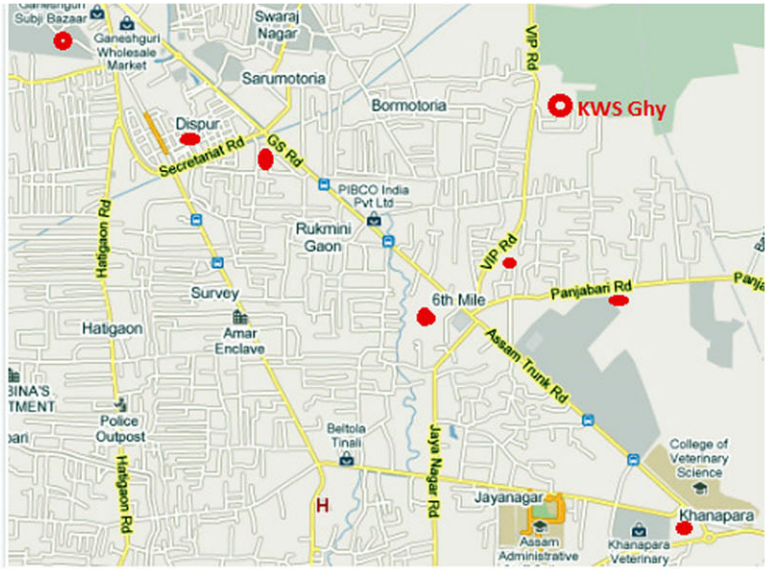
<Theme>  
GOD our HOPE  
(Lam.3:21-24)

<Church Dedication Minister>  
Rev.Dino L Thouthang  
Chairman, AIKWCC  
(All India Kuki Worship Services Co-ordination Committee)

KWS(G) seek your gracious presence on the occasion of their Church inauguration service as per details given herein.

**Brief Background**  
*Established on the 4<sup>th</sup> of January, 1998, KWS(G), a non-denominational Fellowship, grew from strength to strength by the grace of God. In 12 years time, the membership has grown from 120 in 1998 to 400 in 2010, and 4(Four) missionaries are being sponsored by the Church as on date. We thank our heavenly Father for the immense blessing and the sweet fellowship we receive from HBM in various walks of life individually and collectively. In our despair, He heeded us together, and gave us new dreams and new hopes. The Church Building construction which started with the turn of the new millennium in 2000, received continuous outpouring of contributions and prayer support from various quarters and God's*

time to come.....



[www.kwsg.in](http://www.kwsg.in)



KUKI WORSHIP SERVICE, GUWAHATI  
Chachal, VIP Road, 6th Mile,  
Guwahati -781022, Assam, India